

**FORMULATION  
HANDBOOK**



*Cosphatec*



# NATURAL STABILITY FOR MODERN COSMETICS

## WHAT WE DO

Cosphatec is the reliable partner for stabilising modern and natural cosmetics with sustainable, skin-friendly ingredients. Antimicrobial, antioxidative, viscosity and emulsion stability are our fundamental requirements, and our products meet them in full at all times. When looking for new raw materials, we prioritise skin-friendliness and naturalness by using bio-degradable materials from sustainable and natural sources. All our raw ingredients are vegan and GMO-free, with all our core products additionally COSMOS-approved.

### #Sustainability

Sustainability is our number one priority and is reflected in our day-to-day activities. It is our vision that, one day in the future, we will be able to replace all products containing synthetic or questionable ingredients with natural alternatives. To make this vision a reality, we work every day to maintain our high product quality, develop new products and to establish resulting formulations.

### #Listen to the customer

Cosphatec is not only committed to products of the highest quality, but also to excellent service and support. We listen and respond to individual customer requests with the aim to find the perfect solution. Our customers have full access to services in the fields of research and development, quality management, laboratory work, regulatory affairs and sales.

### #Knowledge exchange

Our longstanding experience and the resulting knowledge, make us experts in manufacturing sustainable cosmetics. For us, it is only natural to share our knowledge in handling natural raw ingredients with you. For this purpose, we offer several learning formats where you can find out more about our products and natural stabilisation.



## GUARANTEED STABILITY

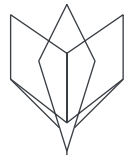
A modern cosmetic formulation must fulfil the high demands of consumers and satisfy the requirements of microbiological stability. This stability can be threatened by microbiological contamination, which on the one hand can take place during the product's manufacturing process, but on the other is mainly brought about by consumers themselves, e.g. by dipping their fingers in creams. To prevent contamination and ensure preservation, a Challenge Test is mandatory for the approval of cosmetic products.

Cosphatec works with external microbiology laboratories to carry out the most common Challenge Testing methods for you. The choice of test depends on individual factors. Do you want to have a formulation with our raw ingredients tested? Simply use our on-line form to order your Challenge Test from us quickly and easily.

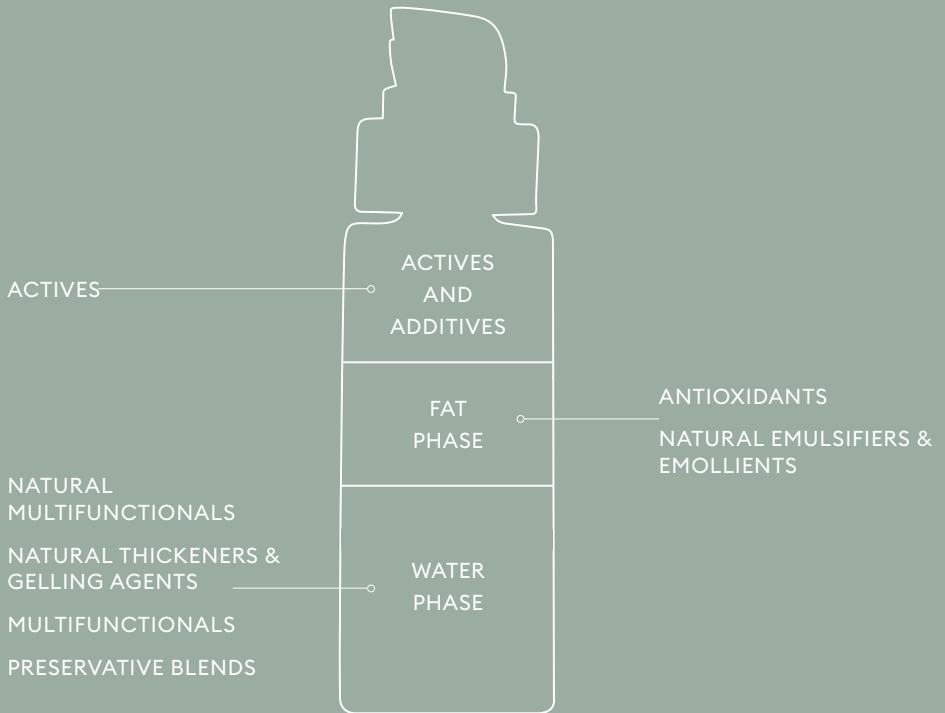
[Click here for more information and to go to our order form:](#)



[cospatec.com/preservative-efficacy-test](https://cospatec.com/preservative-efficacy-test)



# DEVELOP SUSTAINABLE FORMULATIONS



Our products offer antimicrobial and antioxidative stability as well as stability for emulsions and viscosity. It is important here to incorporate the individual product groups in the right way to ensure the formulation's stability. The largest product group is the Natural Multifunctionals. They have an antimicrobial property that is effective in the water phase of a formulation. Lipophilic substances in this product group can be pushed into the water phase using solubilisers or a polar oil phase. Multifunctionals and Preservative Blends are incorporated into the water phase in a similar way.

Our natural thickening and gelling agents can enhance both the viscosity and stability of an emulsion by thickening the water phase, which helps to prevent the oil droplets from coalescing.

When it comes to maintaining the stability of the lipid phase, our antioxidants can protect the oils from oxidation. The use of our natural emulsifiers and emollients ensures a stable emulsion and leads to outstanding sensory properties.

The last and important ingredients in a formulation are the actives. Cosphatec offers a range of highly effective actives that can be used as antioxidants, anti-ageing agents or warming agents.

# CONTENTS

## FACECARE

★	Current Trends .....	3
	Happy Barrier Cream .....	4
	BHA Liquid Peeling .....	5
	Boosting Serum .....	6
	Skin Perfecting Toner .....	7
	Anti Spot Gel .....	8
	Vitamin C Glow Drops.....	9
	Jelly Eye Patches .....	10
	Mattifying Day Cream.....	11
	Hydrating Soft Cream .....	12
	Moisturising Magnolia Cream Gel .....	13
	Anti-Pollution Serum .....	14
	Rich & Natural W/O Cream .....	15
	Beauty Oil .....	16
	Vitalising Skin Gel .....	17

## MENCARE

★	Current Trends.....	19
	Revitalising Day Cream for Men.....	20
	Movember Beard Oil .....	21
	Beard Balm .....	22
	Fresh & Cool Aftershave .....	23

## HAIRCARE

★	Current Trends .....	25
	Shampoo Bar .....	26
	Powder Shampoo .....	27
	Powder to Foam Shampoo .....	28
	Warming Scalp Treatment .....	29
	Scalp Peeling .....	30
	Curling Booster Shampoo .....	31
	Leave-In Hair Cream .....	32
	Intense Repair Hair Mask .....	33

## BODYCARE

⊕ Current Trends .....	35
Deodorant Cream .....	36
Rich & Soft Handcream .....	37
Warming Footcream .....	38
In-Shower Body Lotion .....	39
Urea Body Lotion .....	40
Moisturising Body Yoghurt .....	41

## CLEANSING

⊕ Current Trends .....	43
Soft Cleansing Foam .....	44
Balm To Milk Facial Cleanser .....	45
Natural Peeling Gel .....	46
Natural Jelly Soap .....	47
Gentle Skin Perfecting Scrub .....	48
Aloe Vera Micellar Water .....	49
Soothing 2in1 Make-Up Remover .....	50
Gentle Body Wash .....	51
Bath Bomb .....	52
Refreshing Mouthwash .....	53

## BABY CARE

⊕ Current Trends .....	55
Calendula Baby Lotion .....	56
Mild & Foamy Baby Shampoo .....	57
Wound Protection Baby Cream .....	58
Baby Bath .....	59



When you see this sign, an informative video about the formulation is waiting for you on our website.

Check [cosphatec.com/videos](https://cosphatec.com/videos)

## CURRENT TRENDS

### FACECARE

#### SKINIMALISM & ACTIVE INGREDIENT COSMETIC

More conscious consumption has become a mega-trend, permeating all areas of everyday life. Consumers are not only considering whether their purchases are necessary, but also increasingly questioning the ingredients of the products on offer. This has given rise to the trend of **skinimalism** (a combination of the words skin and minimalism). Skinimalism is about more than just simplifying personal skincare routines – rather, it deals with the ingredients of the products themselves. It is aimed at reducing skincare products to the essentials while saving resources. It is not only about reducing the number of ingredients, but also about choosing the right substances. Suitable ingredients are those which combine positive qualities such as antimicrobial functions with hydrating properties, as is the case with some of our Natural Multifunctionals. As a result, the trend towards innovative **active ingredient cosmetics** is gaining renewed interest. After all, it is crucial that none of the effects are compromised by using fewer ingredients. The term "active ingredient cosmetics" refers to active ingredients which, due to their high concentration in the product, leads to long-term improvements of the skin appearance and have been proven to be effective in studies. Popular ingredients from our portfolio are

##### Hyaluronic acid

A popular anti-ageing active that regulates moisture in the skin.

##### AHA and BHA acids

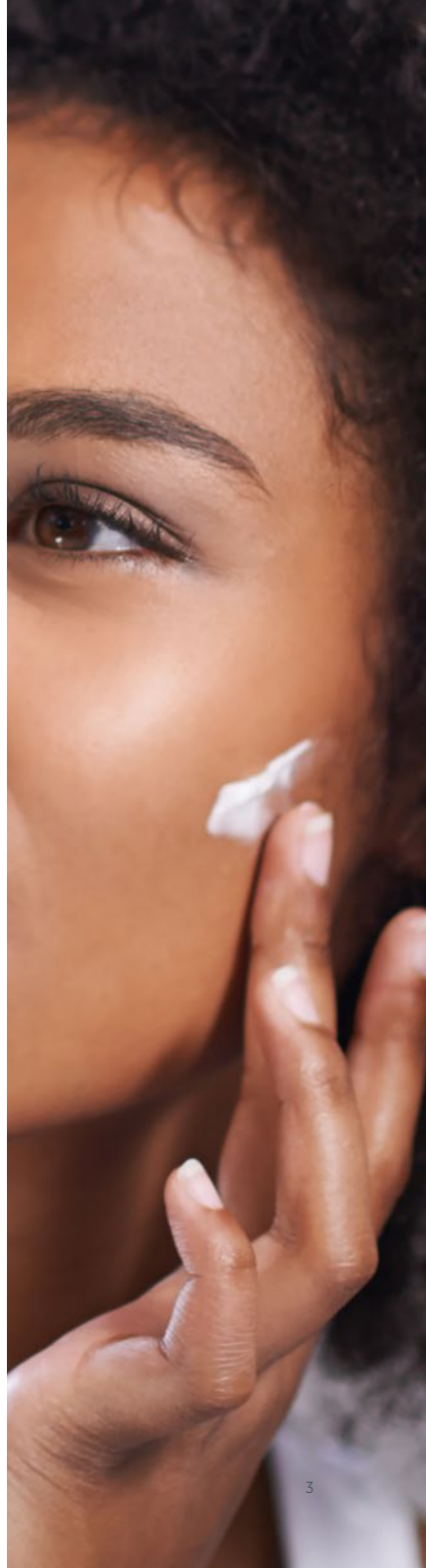
Help to remove dead skin cells; can prevent blocked hair follicles and buildup that leads to dandruff.

##### Did you know?

Our Vitamin C Glow Drops bring two active ingredients directly together: hyaluronic acid and vitamin C – a popular active with anti-inflammatory and antioxidant properties. Want to know more? Go directly to the formulation guide video here:



[cosphatec.com/video/glowdrops](https://cosphatec.com/video/glowdrops)





# HAPPY BARRIER CREAM

Cosphatec

100.90.1.1

HYDRATING. NOURISHING. SKIN BARRIER  
ENHANCING.

ALL NATURAL  
INGREDIENTS

**Alternative preservation: Cosphaderm® Absolute,  
Cosphaderm® GMCY, Cosphaderm® Magnolia Extract 98**

Phase	Ingredient	COSMOS	INCI	Supplier	%
A	Demin. Water		Aqua	-	53.70
A	Cosphaderm® X soft	✓	Xanthan Gum	Cosphatec GmbH	0.60
B	Cosphaderm® Absolute	✓	Propanediol, Sodium Lactate, Betaïne, Aqua	Cosphatec GmbH	20.00
C	Cosphaderm® SF-75H	✓	Hydrogenated Lecithin	Cosphatec GmbH	1.00
D	Imwitor® 372P		Glyceryl Stearate Citrate	IOI Oleo GmbH	2.00
D	Lanette® O		Cetearyl Alcohol	BASF SE	2.00
D	Behenyl Alcohol		Behenyl Alcohol	-	2.50
D	Shea Butter refined		Butyrospermum Parkii Butter	Gustav Heess GmbH	5.00
D	Cosphaderm® GMCY	✓	Glyceryl Caprylate	Cosphatec GmbH	0.30
D	Joboba Oil		Simmondsia Chinensis Seed Oil	Gustav Heess GmbH	3.50
D	MCT Oil Typ V Ph. Eur.		Caprylic/Capric Triglyceride	Gustav Heess GmbH	5.00
D	Squalane		Squalane	-	4.00
D	Cosphaderm® T-70 NON GMO ECO	✓	Tocopherol, Helianthus Annuus Seed Oil	Cosphatec GmbH	0.20
E	Cosphaderm® Magnolia Extract 98	✓	Magnolia Officinalis Bark Extract	Cosphatec GmbH	0.20

## MANUFACTURING PROCESS

Phase A: Combine all ingredients of phase A and stir until everything is completely dissolved.

Phase B: Add phase B to A while stirring.

Phase C: Add phase C to the water phase while stirring. Then heat the water phase to 70-75 °C.

Phase D: Combine all ingredients of phase D and heat to 75°C. Phase E is added to the oil phase just before emulsion is formed.

Add phase D+E to the water phase while stirring. Homogenise at 40°C.

Adjust the pH to 5.5 ± 0.05.

## SPECIFICATION

Appearance: Light beige cream

pH: 5.5 ± 0.05

Stability: Microbiological stability proven, no separation after centrifugation (4000 rpm, 30 min)

Disclaimer: This information and our technical application advice are given to the best of our knowledge, but it is for information purposes only and no responsibility is assumed.

# BHA LIQUID PEELING

Cosphatec

100.98.1.1

EXFOLIATING. HYDRATING. SOOTHING.

**Alternative preservation: Cosphaderm® Absolute**

ALL NATURAL  
INGREDIENTS

Phase	Ingredient	COSMOS	INCI	Supplier	%
A	Demin. Water		Aqua	-	76.00
A	Cosphagard® SA natural	✓	Salicylic Acid	Cosphatec GmbH	2.00
B	Glycerin		Glycerin	CREMER OLEO GmbH & Co. KG	2.00
B	Cosphaderm® Absolute	✓	Propanediol, Sodium Lactate, Betaine, Aqua	Cosphatec GmbH	20.00

## MANUFACTURING PROCESS

Phase A: Combine the ingredients of phase A. Raise the pH to 11 to dissolve Cosphagard® SA natural.

When everything is dissolved, lower the pH back to 4-5 again.

Phase B: Add phase B to A while stirring.

Adjust the pH to  $4.0 \pm 0.05$ .

## SPECIFICATION

Appearance: Clear solution

pH:  $4.0 \pm 0.05$

Stability: Microbiological stability proven, no separation after centrifugation (4000 rpm, 30 min)

# BOOSTING SERUM

100.7.3.1

ANTI-AGING. FAST ABSORBING. HYDRATING.

**Alternative preservation: Cosphaderm® Pocal**

Cosphatec

ALL NATURAL  
INGREDIENTS

Phase	Ingredient	COSMOS	INCI	Supplier	%
A	Demin. Water		Aqua	-	93.50
A	Glycerin		Glycerin	CREMER OLEO GmbH & Co. KG	5.00
A	Cosphaderm® Pocal		Propanediol, Caprylyl Glycol, Caprylhydroxamic Acid	Cosphatec GmbH	1.00
A	Cosphaderm® Sodium Hyaluronate high	✓	Sodium Hyaluronate	Cosphatec GmbH	0.30
A	Cosphaderm® Sodium Hyaluronate low	✓	Sodium Hyaluronate	Cosphatec GmbH	0.20

## Manufacturing Process

Phase A: Combine all ingredients of phase A and stir until everything is completely dissolved. Adjust pH to  $5.5 \pm 0.05$  if necessary.

## Specification

Appearance: Transparent serum

pH:  $5.5 \pm 0.05$

Stability: Microbiological stability proven, no separation after centrifugation (4000 rpm, 30 min)

# SKIN PERFECTING TONER

Cosphatec

100.61.1.2

EXFOLIATING. PORE SIZE REDUCING.  
SOOTHING.

ALL NATURAL  
INGREDIENTS

**Alternative preservation: Cosphaderm® Pentiol natural,  
Cosphaderm® Propanediol natural**

Phase	Ingredient	COSMOS	INCI	Supplier	%
A	Demin. Water		Aqua	-	90.90
A	Cosphaderm® Propanediol natural	✓	Propanediol	Cosphatec GmbH	4.00
A	Cosphaderm® Pentiol natural	✓	Pentylene Glycol	Cosphatec GmbH	3.00
A	Cosphagard® SA natural	✓	Salicylic Acid	Cosphatec GmbH	2.00
B	Cosphaderm® PA ECONAT	✓	Phytic Acid, Aqua	Cosphatec GmbH	0.10

## Manufacturing Process

Phase A: Combine all ingredients of phase A. Raise the pH to 11 to dissolve Cosphagard® SA natural completely.

Phase B: Add phase B and lower the pH to  $4.0 \pm 0.05$ .

## Specification

Appearance: Clear solution

pH:  $4.0 \pm 0.05$

Stability: Microbiological stability proven, no separation after centrifugation (4000 rpm, 30 min)

# ANTI SPOT GEL

100.70.1.1

ANTI INFLAMMATORY. CLARIFYING. PORE SIZE  
REDUCING.

**Alternative preservation: Cosphaderm® Zinc Lactate natural,  
Cosphaderm® Propanediol natural**

Cosphatec

ALL NATURAL  
INGREDIENTS

Phase	Ingredient	COSMOS	INCI	Supplier	%
A	Demin. Water		Aqua	-	88.20
A	Cosphaderm® Propanediol natural	✓	Propanediol	Cosphatec GmbH	5.00
A	Cosphagard® SA natural	✓	Salicylic Acid	Cosphatec GmbH	2.00
B	Glycerin		Glycerin	CREMER OLEO GmbH & Co. KG	2.50
B	Cosphaderm® X soft	✓	Xanthan Gum	Cosphatec GmbH	0.70
B	Cosphaderm® Sodium Hyaluronate high	✓	Sodium Hyaluronate	Cosphatec GmbH	0.10
C	Cosphaderm® Zinc Lactate natural	✓	Zinc Lactate	Cosphatec GmbH	1.00
C	Hamamelis Virginiana Leaf Water		Hamamelis Virginiana Leaf Water	-	0.50

## Manufacturing Process

Phase A: Combine all ingredients of phase A. Raise the pH to 11 to dissolve Cosphagard® SA natural. When everything is dissolved, lower the pH back to 4-5 again.

Phase B: Combine Glycerin, Cosphaderm® X 34 and Cosphaderm® Sodium Hyaluronate high and stir until the powder is wetted. Then add it to phase A.

Phase C: Add phase C under stirring.

Adjust the pH to  $4.0 \pm 0.05$ .

## Specification

Appearance: Transparent, clear gel

pH:  $4.0 \pm 0.05$

Stability: Microbiological stability proven, no separation after centrifugation (4000 rpm, 30 min)

Disclaimer: This information and our technical application advice are given to the best of our knowledge, but it is for information purposes only and no responsibility is assumed.

100.84.1.1

ANTI-AGING. PORE-REFINING. HYDRATING.

**Alternative preservation: Cosphaderm® Heptiol natural**

Phase	Ingredient	COSMOS	INCI	Supplier	%
A	Demin. Water		Aqua	-	87.65
A	Cosphaderm® Heptiol natural	✓	1,2-Heptanediol	Cosphatec GmbH	1.00
A	Glycerin		Glycerin	CREMER OLEO GmbH & Co. KG	2.00
A	Inulin		Inulin	-	1.00
A	Sodium PCA		Sodium PCA	-	0.50
A	RonaCare® Nicotinamide		Niacinamide	Merck KGaA	5.00
B	Sodium Ascorbyl Phosphate		Sodium Ascorbyl Phosphate	-	2.00
B	Sodium Gluconate		Sodium Gluconate	-	0.15
C	Cosphaderm® Sodium Hyaluronate low	✓	Sodium Hyaluronate	Cosphatec GmbH	0.20
C	Cosphaderm® Sodium Hyaluronate high	✓	Sodium Hyaluronate	Cosphatec GmbH	0.30
C	Cosphaderm® X soft	✓	Xanthan Gum	Cosphatec GmbH	0.20

## MANUFACTURING PROCESS

Phase A: Combine all ingredients of phase A and stir until everything is completely dissolved.

Phase B: Add phase B to phase A.

Phase C: Add phase C and stir until everything is completely dissolved.

Adjust pH to  $6.5 \pm 0.05$  if necessary.

## SPECIFICATION

Appearance: Transparent serum

pH:  $6.5 \pm 0.05$

Stability: Microbiological stability proven, no separation after centrifugation (4000 rpm, 30 min)

# JELLY EYE PATCHES

Cosphatec

100.88.1.1

HYDRATING. REFRESHING. ANTI-AGING.

**Alternative preservation: Cosphaderm® Heptiol natural,  
Cosphaderm® Pentiol natural**

Phase	Ingredient	COSMOS	INCI	Supplier	%
A	Demin. Water		Aqua	-	87.60
A	Cosphaderm® Pentiol natural	✓	Pentylene Glycol	Cosphatec GmbH	4.00
A	Cosphaderm® Heptiol natural	✓	1,2-Heptanediol	Cosphatec GmbH	1.00
A	Glycerin		Glycerin	CREMER OLEO GmbH & Co. KG	3.00
A	Cosphaderm® Sodium Hyaluronate high	✓	Sodium Hyaluronate	Cosphatec GmbH	0.20
A	Cosphaderm® Sodium Hyaluronate low	✓	Sodium Hyaluronate	Cosphatec GmbH	0.20
A	Cosphaderm® X 34	✓	Xanthan Gum	Cosphatec GmbH	0.50
A	Cosphaderm® KG	✓	Amorphophallus Konjac Root Extract	Cosphatec GmbH	0.50
A	RonaCare® Nicotinamide		Niacinamide	Merck KGaA	3.00
B	Cosmetic Colour			-	q.s.

## MANUFACTURING PROCESS

Phase A: Prepare phase A and stir until dispersed. Adjust the pH to  $6.5 \pm 0.05$ .

Phase B: Add colour if wanted.

Heat the mixture to 80-90°C and keep this temperature for 2 – 3 minutes.

Quickly pour the hot mixture into moulds and let it cool down.

## SPECIFICATION

Appearance: Translucent or coloured, elastic jelly

pH:  $6.5 \pm 0.05$

Stability: Microbiological stability proven, no separation after centrifugation (4000 rpm, 30 min)

# MATTIFYING DAY CREAM

Cosphatec

100.69.1.1

MOISTURISING. QUICKLY ABSORBING. LIGHT  
GEL CREAM TEXTURE.

ALL NATURAL  
INGREDIENTS

**Alternative preservation: Cosphaderm® Zinc Lactate natural,  
Cosphaderm® GeMix**

Phase	Ingredient	COSMOS	INCI	Supplier	%
A	Demin. Water		Aqua	-	76.30
A	Glycerin		Glycerin	CREMER OLEO GmbH & Co. KG	3.00
A	Cosphaderm® Propanediol natural	✓	Propanediol	Cosphatec GmbH	2.00
A	Cosphaderm® Zinc Lactate natural	✓	Zinc Lactate	Cosphatec GmbH	0.50
A	Cosphaderm® X 34	✓	Xanthan Gum	Cosphatec GmbH	0.30
B	PolyAqual®-2W		Polyglyceryl-2 Stearate, Glyceryl Stearate, Stearyl Alcohol	Innovacos	4.00
B	Lanette® O		Cetearyl Alcohol	BASF SE	2.50
B	Cosphaderm® Feel	✓	Triheptanoin	Cosphatec GmbH	3.00
B	MCT Oil Typ V Ph. Eur.		Caprylic/Capric Triglyceride	Gustav Heess GmbH	4.00
B	Sunflower Oil		Helianthus Annuus Seed Oil	Gustav Heess GmbH	3.00
B	Cosphaderm® GeMix	✓	Glyceryl Caprylate, Glyceryl Undecylenate	Cosphatec GmbH	1.20
B	Cosphaderm® T-70 NON GMO ECO	✓	Helianthus Annuus Seed Oil, Tocopherol	Cosphatec GmbH	0.20

## MANUFACTURING PROCESS

Phase A: Combine all ingredients of phase A and stir until everything is completely dissolved.

Phase B: Combine all ingredients of phase B.

Heat both phases separately to 75-80 °C. Add phase B to A while stirring and then homogenise. Adjust the pH to  $5.5 \pm 0.05$ .

## SPECIFICATION

Appearance: White gel cream

pH:  $5.5 \pm 0.05$

Stability: Microbiological stability proven, no separation after centrifugation (4000 rpm, 30 min)



# HYDRATING SOFT CREAM

100.75.1.2

MOISTURISING. PROTECTING. SOOTHING.

**Alternative preservation: Cosphaderm® Pocal**

Cosphatec

ALL NATURAL  
INGREDIENTS

Phase	Ingredient	COSMOS	INCI	Supplier	%
A	Demin. Water		Aqua	-	74.60
A	Glycerin		Glycerin	CREMER OLEO GmbH & Co. KG	3.00
A	RonaCare® Nicotinamide		Niacinamide	Merck KGaA	3.50
A	Cosphaderm® KG	✓	Amorphophallus Konjac Root Extract	Cosphatec GmbH	0.20
B	Imwitor 960 K		Glyceryl Stearate SE	IOI Oleo GmbH	2.00
B	Potassium Cetyl Phosphate		Potassium Cetyl Phosphate	-	1.00
B	Babassu Oil		Orbignya Oleifera (Babassu) Seed Oil	Gustav Heess GmbH	6.00
B	Squalane		Squalane	-	3.00
B	Myristyl Myristate		Myristyl Myristate	-	2.00
B	Stearic Acid		Stearic Acid	-	1.00
B	Cosphaderm® T-70 NON GMO ECO	✓	Tocopherol, Helianthus Annuus Seed Oil	Cosphatec GmbH	0.20
B	Ecorol® 16/98 P		Cetyl Alcohol	Ecogreen Oleochemicals	0.50
C	Cosphaderm® Pocal		Propanediol, Caprylyl Glycol, Caprylhydroxamic Acid	Cosphatec GmbH	1.00
C	CORN PO4 PH "B"		Distarch Phosphate	Agrana	2.00

## MANUFACTURING PROCESS

Phase A: Combine all ingredients of phase A and stir until everything is completely dissolved.

Phase B: Combine all ingredients of phase B.

Heat both phases separately to 75 °C and add phase B to A while homogenising.

Phase C: Add phase C to phase A/B under stirring.

Adjust the pH to  $5.5 \pm 0.05$ .

## SPECIFICATION

Appearance: White emulsion

pH:  $5.5 \pm 0.05$

Stability: Microbiological stability proven, no separation after centrifugation (4000 rpm, 30 min)

Disclaimer: This information and our technical application advice are given to the best of our knowledge, but it is for information purposes only and no responsibility is assumed.

# MOISTURISING MAGNOLIA CREAM GEL

100.13.1.1

ACTIVE AGAINST ACNE. NOURISHING. LIGHT AND SOFT TEXTURE.

Cosphatec

ALL NATURAL  
INGREDIENTS

**Alternative preservation: Cosphaderm® Pentiol natural, Cosphaderm® Propanediol natural, Cosphaderm® Magnolia Extract 98**

Phase	Ingredient	COSMOS	INCI	Supplier	%
A	Imwitor® 375		Glyceryl Citrate, Lactate, Lineolate, Oleate	IOI Oleo GmbH	0.50
A	Babassu Oil		Orbignya Oleifera Seed Oil	Gustav Heess GmbH	2.00
A	Macadamia Nut Oil		Macadamia Ternifolia Seed Oil	Gustav Heess GmbH	2.00
A	Shea Butter refined		Butyrospermum Parkii Butter	Gustav Heess GmbH	1.00
A	Cosphaderm® Feel	✓	Triheptanoin	Cosphatec GmbH	2.00
A	Cosphaderm® T-70 NON GMO ECO	✓	Tocopherol, Helianthus Annuus Seed Oil	Cosphatec GmbH	0.50
A	Cosphaderm® Magnolia Extract 98	✓	Magnolia Officinalis Bark Extract	Cosphatec GmbH	0.05
B	Cosphaderm® SF-75H	✓	Hydrogenated Lecithin	Cosphatec GmbH	1.00
B	Demin. Water		Aqua	-	23.25
C	Glycerin		Glycerin	CREMER OLEO GmbH & Co. KG	3.00
C	Cosphaderm® Propanediol natural	✓	Propanediol	Cosphatec GmbH	4.00
C	Cosphaderm® Pentiol natural	✓	Pentylene Glycol	Cosphatec GmbH	5.00
C	Cosphaderm® KG	✓	Amorphophallus Konjac Root Extract	Cosphatec GmbH	0.80
C	Demin. Water		Aqua	-	54.90

## Manufacturing Process

Phase A: Prepare phase A and melt at 50 °C, then cool down to room temperature.

Phase B: Prepare phase B and stir for 10 min.

Phase C: Prepare all ingredients of phase C except water. Slowly add the water and stir until completely dissolved.

Combine phase A and B and homogenise. Add phase A+B slowly to phase C under stirring.

Adjust pH to 5.5 ± 0.05.

## Specification

Appearance: Shiny, viscous emulsion

pH: 5.5 ± 0.05

Stability: Microbiological stability proven, no separation after centrifugation (4000 rpm, 30 min)

# ANTI-POLLUTION SERUM

Cosphatec

100.92.1.1

ANTI-POLLUTION. ANTIOXIDANT.  
MOISTURISING.

ALL NATURAL  
INGREDIENTS

**Alternative preservation: Cosphaderm® Dicapo natural, Cosphaderm® Magnolia Extract 98, Cosphaderm® Propanediol natural**

Phase	Ingredient	COSMOS	INCI	Supplier	%
A	Demin. Water		Aqua	-	77.80
A	Cosphaderm® Propanediol natural	✓	Propanediol	Cosphatec GmbH	3.00
A	Cosphaderm® X soft	✓	Xanthan Gum	Cosphatec GmbH	0.80
A	Cosphaderm® Sodium Hyaluronate high	✓	Sodium Hyaluronate	Cosphatec GmbH	0.10
A	Cosphaderm® Sodium Hyaluronate low	✓	Sodium Hyaluronate	Cosphatec GmbH	0.10
A	Sodium PCA		Sodium PCA	-	0.50
A	Cosphaderm® SF-75H	✓	Hydrogenated Lecithin	Cosphatec GmbH	1.50
B	Imwitor® 372P		Glyceryl Stearate Citrate	IOI Oleo GmbH	2.00
B	Shea Butter refined		Butyrospermum Parkii Butter	Gustav Heess GmbH	2.00
B	Joboba Oil		Simmondsia Chinensis Seed Oil	Gustav Heess GmbH	4.00
B	MCT Oil Typ V Ph. Eur.		Caprylic/Capric Triglyceride	Gustav Heess GmbH	5.00
B	Camellia Seed Oil		Camellia Oleifera Seed Oil	-	2.00
C	Cosphaderm® Dicapo natural	✓	Caprylyl Glycol, Propanediol, Glyceryl Caprylate	Cosphatec GmbH	0.70
C	Cosphaderm® Magnolia Extract 98	✓	Magnolia Officinalis Bark Extract	Cosphatec GmbH	0.20
D	Rosemary Extract		Rosmarinus Officinalis Extract, Helianthus Annuus Seed Oil	-	0.05
D	Cosphaderm® T-70 NON GMO ECO	✓	Tocopherol, Helianthus Annuus Seed Oil	Cosphatec GmbH	0.25

## MANUFACTURING PROCESS

Phase A: Combine all ingredients of phase A and stir until everything is completely dissolved.

Phase B: Combine all ingredients of phase B.

Heat both phases separately to 70-75 °C and add phase B to A while stirring. Then homogenise the formulation.

Phase C: Dissolve Cosphaderm® Magnolia Extract 98 in Cosphaderm® Dicapo natural.

Add phase C and phase D to phase A+B after cooling to 40 °C while stirring.

Adjust the pH to 5.5 ± 0.05.

## SPECIFICATION

Appearance: Light beige, shiny emulsion

pH: 5.5 ± 0.05

Stability: Microbiological stability proven, no separation after centrifugation (4000 rpm, 30 min)

Disclaimer: This information and our technical application advice are given to the best of our knowledge, but it is for information purposes only and no responsibility is assumed.

# RICH & NATURAL W/O CREAM

Cosphatec

100.71.2.1

REGENERATING. PROTECTING. SOFT TEXTURE.

**Alternative preservation: Cosphaderm® LA-T, Cosphaderm® pAS natural, Cosphaderm® Pentiol natural**

ALL NATURAL  
INGREDIENTS

Phase	Ingredient	COSMOS	INCI	Supplier	%
A	Demin. Water		Aqua	-	70.60
A	Cosphaderm® pAS natural	✓	p-Anisic Acid	Cosphatec GmbH	0.20
A	Cosphaderm® LA-T	✓	Levulinic Acid, Glycerin, Sodium Levulinate, Aqua	Cosphatec GmbH	1.40
B	Cosphaderm® Pentiol natural	✓	Pentylene Glycol	Cosphatec GmbH	1.50
B	Glycerin		Glycerin	CREMER OLEO GmbH & Co. KG	3.00
B	Magnesium Sulfate		Magnesium Sulfate	-	0.70
C	Imwitor® 600		Polyglyceryl-3 Polyricinoleate	IOI Oleo GmbH	3.00
C	Candelilla Wax		Euphorbia Cerifera (Candelilla) Wax	-	0.60
C	Lanette® O		Cetearyl Alcohol	BASF SE	1.00
C	MCT Oil Typ V Ph. Eur.		Caprylic/Capric Triglyceride	Gustav Heess GmbH	7.00
C	Almond Oil		Prunus Amygdalus Dulcis Oil	Gustav Heess GmbH	5.00
C	Joboba Oil		Simmondsia Chinensis Seed Oil	Gustav Heess GmbH	2.00
C	Miglyol® Coco 810		Coco-Caprylate / Caprate	IOI Oleo GmbH	3.50
D	Cosphaderm® Tapmix	✓	Lecithin, Helianthus Annuus Seed Oil, Tocopherol, Ascorbyl Palmitate	Cosphatec GmbH	0.50

## MANUFACTURING PROCESS

Phase A: Combine all ingredients of phase A and raise the pH to 10 to dissolve Cosphaderm® pAS natural. Stir until everything is completely dissolved. Afterwards, adjust the pH to  $5.5 \pm 0.05$  by adding Citric Acid.

Phase B: Add all ingredients of phase B to phase A.

Phase C: Combine all ingredients and heat to 80 °C. Then add phase A/B to phase C while homogenising. Add phase D to the finished formulation and homogenise.

## SPECIFICATION

Appearance: White, slightly beige cream

pH:  $5.5 \pm 0.05$

Stability: Microbiological stability proven, no separation after centrifugation (4000 rpm, 30 min)

# BEAUTY OIL

100.19.1.1

SILKY SKIN FEEL. NOURISHING. ANTIOXIDANT.

**Oil protection: Cosphaderm® T-70 NON GMO, Cosphaderm® Magnolia Extract 98**

Cosphatec

ALL NATURAL  
INGREDIENTS

Phase	Ingredient	COSMOS	INCI	Supplier	%
A	Almond Oil		Prunus Amygdalus Dulcis Oil	Gustav Heess GmbH	40.00
A	Rosehip Seed Oil		Rosa Canina Fruit Oil	Gustav Heess GmbH	3.00
A	Joboba Oil		Simmondsia Chinensis Seed Oil	Gustav Heess GmbH	45.00
A	Evening Primrose Oil		Oenothera Biennis Oil	Gustav Heess GmbH	2.60
A	Pomegranate Seed Oil		Punica Granatum Seed Oil	Gustav Heess GmbH	4.00
A	Grape Seed Oil		Vitis Vinifera Seed Oil	Gustav Heess GmbH	5.00
A	Cosphaderm® T-70 NON GMO		Tocopherol, Helianthus Annuus Seed Oil	Cosphatec GmbH	0.20
A	Cosphaderm® Magnolia Extract 98	✓	Magnolia Officinalis Bark Extract	Cosphatec GmbH	0.20
A	Perfume		Parfum	-	q.s.

## Manufacturing Process

Phase A: Mix all ingredients together and heat to 50 °C until pomegranate seed oil is melted. Stir phase A until complete dissolution.

## Specification

Appearance: Yellow liquid

Stability: Microbiological stability proven (Water activity value less than 0.75)

# VITALISING SKIN GEL

100.28.2.1

QUICKLY ABSORBING. RICH SKIN FEEL.  
HYDRATING.

Cosphatec

ALL NATURAL  
INGREDIENTS

**Alternative preservation: Cosphaderm® LA-T, Cosphaderm® Sodium pAS natural**

Phase	Ingredient	COSMOS	INCI	Supplier	%
A	Glycerin		Glycerin	CREMER OLEO GmbH & Co. KG	4.00
A	Cosphaderm® X soft	✓	Xanthan Gum	Cosphatec GmbH	1.00
A	Cosphaderm® Sodium Hyaluronate low	✓	Sodium Hyaluronate	Cosphatec GmbH	0.20
A	Demin. Water		Aqua	CREMER OLEO GmbH & Co. KG	59.70
A	Cosphaderm® LA-T	✓	Levulinic Acid, Glycerin, Sodium Levulinate, Aqua	Cosphatec GmbH	1.20
B	Cosphaderm® Sodium pAS natural	✓	Sodium Anisate	Cosphatec GmbH	0.40
C	Demin. Water		Aqua	-	22.50
C	Cosphaderm® SF-75H	✓	Hydrogenated Lecithin	Cosphatec GmbH	3.50
C	Sunflower Oil		Helianthus Annuus Seed Oil	Gustav Heess GmbH	5.00
C	Jojoba Oil		Simmondsia Chinensis Seed Oil	Gustav Heess GmbH	2.50

## Manufacturing Process

Phase A: Prepare phase A and stir until everything is completely dissolved. Adjust pH value to 5.5.

Phase B: Add Cosphaderm® Sodium pAS natural to phase A under stirring.

Phase C: Prepare phase C and homogenise for 5 minutes with high performance disperser (stator/rotor) at max. speed.

Add phase C to phase A+B in small steps under stirring.

Adjust pH value to  $5.5 \pm 0.05$ .

## Specification

Appearance: Shiny emulsion

pH:  $5.5 \pm 0.05$

Stability: Microbiological stability proven, no separation after centrifugation (4000 rpm, 30 min)

## MENCARE

### SPECIFIC CARE RANGES & MOVEMBER

Personal creams, special care oils or styling products – the market for care products specifically developed for men is growing. Nowadays, men are much more conscious when it comes to the topic of beauty and care. The rise of online shopping, appearances by attractive male models in the media and the creation of **care ranges** by famous film and internet stars are boosting people's expectations of their own bodies and increasing their desire for care products. Viral trends such as "**Movember**", where men grow out well-kept beards during the month of November to raise awareness of men's mental health, are further promoting the spread of the movement. As men's skin is often tougher and greasier, has a different structure to female skin, and is regularly stressed through shaving, caring for it requires special demands. The right stabilisation method enables the development of outstanding formulations to suit all skin types.

#### Did you know?

Formulations for men and women can be created easily with our odour-neutral raw ingredients. For example, the Mattifying Day Cream provides a good care foundation for both genders. Here you can see our formulation video:



[cosphatec.com/video/mattifying-day-cream](https://cosphatec.com/video/mattifying-day-cream)



# REVITALISING DAY CREAM FOR MEN

Cosphatec

600.79.1.1

COOLING. HYDRATING. REFRESHING.

**Alternative preservation: Cosphaderm® pAS natural, Cosphaderm® Capo, Cosphaderm® Propanediol natural**

ALL NATURAL  
INGREDIENTS

Phase	Ingredient	COSMOS	INCI	Supplier	%
A	Demin. Water		Aqua	-	78.50
A	Cosphaderm® pAS natural	✓	p-Anisic Acid	Cosphatec GmbH	0.20
B	Glycerin		Glycerin	CREMER OLEO GmbH & Co. KG	3.00
B	Cosphaderm® Propanediol natural	✓	Propanediol	Cosphatec GmbH	2.00
B	Cosphaderm® X 34	✓	Xanthan Gum	Cosphatec GmbH	0.40
C	PolyAqual®-2W		Polyglyceryl-2 Stearate, Glyceryl Stearate, Stearyl Alcohol	Innovacos	3.50
C	Lanette® O		Cetearyl Alcohol	BASF SE	1.50
C	Babassu Oil		Orbignya Oleifera Seed Oil	Gustav Heess GmbH	5.00
C	Cosphaderm® Feel	✓	Triheptanoin	Cosphatec GmbH	3.00
C	Shea Butter refined		Butyrospermum Parkii Butter	Gustav Heess GmbH	1.00
C	Cosphaderm® T-70 NON GMO ECO	✓	Tocopherol, Helianthus Annuus Seed Oil	Cosphatec GmbH	0.20
D	Cosphaderm® Capo	✓	Caprylyl Glycol, Propanediol	Cosphatec GmbH	1.00
D	Ethanol		Alcohol	-	0.50
D	Menthol		Menthol	-	0.20

## MANUFACTURING PROCESS

Phase A: Prepare phase A. Raise the pH to 10 to dissolve Cosphaderm® pAS natural and stir until everything is completely dissolved. Afterwards, adjust the pH to 5.5 ± 0.05 by adding Citric Acid.

Phase B: Add all ingredients of phase B to phase A. Then heat phase A+B to 75 °C.

Phase C: Combine all ingredients and heat to 75 °C. Add then phase C to phase A+B under strong stirring and homogenise.

Phase D: Dissolve the menthol in Cosphaderm® Capo and ethanol and add below 40°C.

Adjust the pH to 5.5 ± 0.05.

## SPECIFICATION

Appearance: White emulsion

pH: 5.5 ± 0.05

Stability: Microbiological stability proven, no separation after centrifugation (4000 rpm, 30 min)



# MOVEMBER BEARD OIL

600.87.1.1

NOURISHING. CONDITIONING. NON-GREASY OIL.

Oil protection: **Cosphaderm® T-70 NON GMO ECO**

Cosphatec

ALL NATURAL  
INGREDIENTS

Phase	Ingredient	COSMOS	INCI	Supplier	%
A	Joboba Oil		Simmondsia Chinensis Seed Oil	Gustav Heess GmbH	30.00
A	Castor Oil		Ricinus Communis Seed Oil	Gustav Heess GmbH	20.00
A	Squalane		Squalane	-	5.00
A	Almond Oil		Prunus Amygdalus Dulcis Oil	Gustav Heess GmbH	12.50
A	Argan Oil		Argania Spinosa Kernel Oil	Gustav Heess GmbH	5.00
A	MCT Oil Typ V Ph. Eur.		Caprylic/Capric Triglyceride	Gustav Heess GmbH	27.30
A	Cosphaderm® T-70 NON GMO ECO	✓	Tocopherol, Helianthus Annuus Seed Oil	Cosphatec GmbH	0.20

## MANUFACTURING PROCESS

Phase A: Mix all ingredients together and stir until homogeneous.

## SPECIFICATION

Appearance: Yellow liquid

Stability: Microbiological stability proven (Water activity value less than 0.75)

# BEARD BALM

600.34.1.1

NOURISHING. CONDITIONING. STYLING.

**Oil protection: Cosphaderm® T-70 NON GMO ECO,  
Cosphaderm® GeMix**

Cosphatec

ALL NATURAL  
INGREDIENTS

Phase	Ingredient	COSMOS	INCI	Supplier	%
A	Shea Butter refined		Butyrospermum Parkii Butter	Gustav Heess GmbH	36.30
A	Mango Butter		Mangifera Indica Seed Butter	-	23.00
A	Wool Fat		Lanolin	Gustav Heess GmbH	8.00
A	Apricot Kernel Oil		Prunus Armeniaca Kernel Oil	Gustav Heess GmbH	10.30
A	Joboba Oil		Simmondsia Chinensis Seed Oil	Gustav Heess GmbH	8.00
A	Beeswax		Cera alba	Gustav Heess GmbH	7.00
A	Cocoa Butter		Theobroma Cacao Seed Butter	Gustav Heess GmbH	6.00
A	Cosphaderm® T-70 NON GMO ECO	✓	Tocopherol, Helianthus Annuus Seed Oil	Cosphatec GmbH	0.20
A	Cosphaderm® GeMix	✓	Glyceryl Caprylate, Glyceryl Undecylenate	Cosphatec GmbH	1.20

## Manufacturing Process

Phase A: Prepare phase A and heat to 70 °C until fully melted. Stir until completely dissolved. Pour into container and let it cool down.

## Specification

Appearance: Yellow balm

Stability: Microbiological stability proven (Water activity value less than 0.75)

# FRESH & COOL AFTERSHAVE

Cosphatec

600.37.1.1

COOLING. SOOTHING. MOISTURISING.

**Alternative preservation: Cosphaderm® MultiMEG,  
Cosphaderm® Propanediol natural**

Phase	Ingredient	COSMOS	INCI	Supplier	%
A	Demin. Water		Aqua	-	67.55
A	Glycerin		Glycerin	CREMER OLEO GmbH & Co. KG	3.00
A	Cosphaderm® Propanediol natural	✓	Propanediol	Cosphatec GmbH	3.00
A	Cosphaderm® X 34	✓	Xanthan Gum	Cosphatec GmbH	0.20
A	Ronacare® Allantoin		Allantoin	Merck KGaA	0.20
A	Aristoflex® AVC		Ammonium Acryloyldimethyltaurate/ VP Copolymer	Clariant AG	0.50
B	Cosphaderm® Feel	✓	Triheptanoin	Cosphatec GmbH	3.50
B	Joboba Oil		Simmondsia Chinensis Seed Oil	Gustav Heess GmbH	4.00
B	Olive Oil		Olea Europaea Fruit Oil	Gustav Heess GmbH	2.50
B	Almond Oil		Prunus Amygdalus Dulcis Oil	Gustav Heess GmbH	2.00
B	Avocado Oil		Persea Gratissima Oil	Gustav Heess GmbH	2.00
B	Sesame Oil		Sesamum Indicum Seed Oil	Gustav Heess GmbH	2.00
B	Carotene Oil		Glycine Soja Oil, beta-carotene	-	0.05
B	Shea Butter refined		Butyrospermum Parkii Butter	Gustav Heess GmbH	2.00
B	Cocoa Butter		Theobroma Cacao Seed Butter	Gustav Heess GmbH	0.20
B	Cosphaderm® T-70 NON GMO		Tocopherol, Helianthus Annuus Seed Oil	Cosphatec GmbH	0.30
B	Lamecreme		Glyceryl Stearate, Glyceryl Stearate Citrate	-	4.00
B	Camphor		Camphor	-	0.10
C	Ethanol		Alcohol	Carl Roth GmbH & Co. KG	0.60
C	Menthol		Menthol	FREY&LAU GmbH	0.70
D	Cosphaderm® MultiMEG	✓	Glyceryl Caprylate, Pentylene Glycol, Magnolia Officinalis Bark Extract	Cosphatec GmbH	1.60

## Manufacturing Process

Phase A: Combine all ingredients of phase A and stir until completely dissolved.

Phase B: Prepare phase B and separately heat phase A and phase B to 80 °C. Add phase B to phase A while stirring.

Phase C+D: Add phase C and D below 40 °C.

Adjust pH to  $5.5 \pm 0.05$ .

**Specification**

Appearance: Slightly yellowish cream

pH:  $5.5 \pm 0.05$

Stability: Microbiological stability proven, no separation after centrifugation (4000 rpm, 30 min)

## HAIRCARE

### WATER-FREE & SKINIFICATION

All of us are faced with the challenge of protecting our planet and saving resources. One trend that has developed out of these concerns is that of **water-free** products. Water-free cosmetics, also called solid cosmetics, refers to skin-care and cosmetics products that are formulated almost entirely without water. Oil-based, solid formulations or as powders, water-free products are not only designed with high efficacy in mind, but also handy and practical for travel. The main priority with this trend is sustainability: the abandonment of the use of water aims to counteract the threatening water shortage, at the same time, saving energy costs. The compressed volume of the products also ensures lower consumption of fuel and packaging. Solid shower bars, gels or powder shampoos are just some of the resulting product innovations that have been received with great excitement on the market.

At the same time, another trend has developed: **skinification**. This trend is concerned with the right care products for our scalp. Instead of products that just take care of the hair itself and its results, scalp serums, exfoliation products and many other similar products are now taking centre stage. The scalp is exposed to the same environmental influences as the rest of the skin. The right care for the scalp therefore determines whether it is greasy or generally tends to be dry, as well as whether the hair looks shiny and healthy instead of dull and brittle.

#### Did you know?

Whether it's conditioner, rinse-off, mask or serum, we have developed a number of exciting formulations for the hair and scalp. Scan the code to watch our formulation guide for our powder shampoo:



[cosphatec.com/video/powdershampoo](https://cosphatec.com/video/powdershampoo)



# SHAMPOO BAR

300.65.1.1

WATERFREE. CLEANSING. ALL NATURAL.

**Alternative preservation: Cosphaderm® Dicapo natural**

Cosphatec

ALL NATURAL  
INGREDIENTS

Phase	Ingredient	COSMOS	INCI	Supplier	%
A	BergaSoft SCI 80		Sodium Cocoyl Isethionate	Berg + Schmidt GmbH & Co. KG	47.00
A	Lanette® 16		Cetyl Alcohol	BASF SE	15.80
A	Kahlwax 6607L		Helianthus Annuus Seed Cera, Ascorbyl Palmitate, Tocopherol, Helianthus Annuus Seed Oil	Kahl GmbH & Co. KG	2.50
A	Cosphaderm® Feel	✓	Triheptanoin	Cosphatec GmbH	5.00
A	Coconut Oil		Coco Nucifera Oil	Gustav Heess GmbH	15.00
A	Joboba Oil		Simmondsia Chinensis Seed Oil	Gustav Heess GmbH	10.00
B	Cosphaderm® Tapmix	✓	Lecithin, Helianthus Annuus Seed Oil, Tocopherol, Ascorbyl Palmitate	Cosphatec GmbH	1.00
B	Cosphaderm® Dicapo natural	✓	Caprylyl Glycol, Propanediol, Glyceryl Caprylate	Cosphatec GmbH	0.70
B	Corn Starch		Zea Mays Starch	-	3.00

## Manufacturing Process

Combine all ingredients of phase A, heating to 80°C. When everything has melted, add phase B. Take off heat and pour into molds.

## Specification

Appearance: Solid, yellowish bar

Stability: Microbiological stability proven (Water activity value less than 0.75)

# POWDER SHAMPOO

300.67.2.1

SUSTAINABLE. POWDER TO GEL. EASY TO REFILL.

**Alternative preservation: Cosphaderm® Sodium LAAS, Cosphaderm® Zinc Lactate**

Cosphatec

ALL NATURAL  
INGREDIENTS

Phase	Ingredient	COSMOS	INCI	Supplier	%
A	Sodium Lauryl Sulfoacetate		Sodium Lauryl Sulfoacetate	-	8.00
A	BergaSoft SCI 80		Sodium Cocoyl Isethionate	Berg + Schmidt GmbH & Co. KG	5.00
A	Cosphaderm® X 34	✓	Xanthan Gum	Cosphatec GmbH	0.10
A	Cosphaderm® Sodium LAAS	✓	Sodium Levulinate, Sodium Anisate	Cosphatec GmbH	1.00
A	Citric Acid		Citric Acid	-	0.10
A	Cosphaderm® SF-75H	✓	Hydrogenated Lecithin	Cosphatec GmbH	0.50
A	Sorbitol		Sorbitol	-	2.00
A	Sodium Chloride		Sodium Chloride	-	0.45
A	Cosphaderm® Zinc Lactate natural	✓	Zinc Lactate	Cosphatec GmbH	0.50
B	Water		Aqua	-	82.35

## Manufacturing Process

Phase A: Combine all ingredients of phase A and stir until everything is homogeneous.

Phase B: Simply add lukewarm tap water to the bottle, then add in your powder shampoo. Shake for approximately 30 seconds and wait until everything has been dissolved. Let the mixture rest for 24 h.

## Specification

Appearance: Pearlescent gel

pH:  $5.5 \pm 0.10$

Stability: Microbiological stability proven, no separation after centrifugation (4000 rpm, 30 min)

# POWDER TO FOAM SHAMPOO

Cosphatec

400.89.1.1

WATERLESS. INSTANT WATER-ACTIVATED FORMULATION FOR IMMEDIATE USE. CLEAN BEAUTY.

ALL NATURAL  
INGREDIENTS

**Alternative preservation: Cosphaderm® Zinc Lactate**

Phase	Ingredient	COSMOS	INCI	Supplier	%
A	Sodium Cocoyl Isethionate		Sodium Cocoyl Isethionate	Berg + Schmidt GmbH & Co. KG	53.00
A	Sorbitol		Sorbitol	-	10.00
A	Cosphaderm® X 34	✓	Xanthan Gum	Cosphatec GmbH	3.00
A	Cosphaderm® KG	✓	Amorphophallus Konjac Root Extract	Cosphatec GmbH	1.00
A	Cosphaderm® Zinc Lactate natural	✓	Zinc Lactate	Cosphatec GmbH	2.00
A	Citric Acid		Citric Acid	-	0.80
A	Hydrolyzed Wheat Protein		Hydrolyzed Wheat Protein	-	1.50
A	Magnesium Stearate		Magnesium Stearate	-	10.00
A	Cosphaderm® SF-75H	✓	Hydrogenated Lecithin	Cosphatec GmbH	1.00
B	Sunflower Oil		Helianthus Annuus Seed Oil	Gustav Heess GmbH	2.50
B	Cosphaderm® T-70 NON GMO ECO	✓	Tocopherol, Helianthus Annuus Seed Oil	Cosphatec GmbH	0.20

## MANUFACTURING PROCESS

Phase A: Mix all ingredients together and stir until homogeneous.

Phase B: Combine all ingredients and add phase B to A while stirring.

## SPECIFICATION

Appearance: White powder

Stability: Microbiological stability proven (Water activity value less than 0.75)



# WARMING SCALP TREATMENT

Cosphatec

400.94.1.1

WARMING. HYDRATING. CARING.

**Alternative preservation: Cosphaderm® Pentiol natural,  
Cosphaderm® Propanediol natural**

Phase	Ingredient	COSMOS	INCI	Supplier	%
A	Demin. Water		Aqua	-	67.40
A	Glycerin		Glycerin	CREMER OLEO GmbH & Co. KG	5.00
A	D-Panthenol 75 %		Panthenol, Aqua	-	0.50
A	Sodium PCA		Sodium PCA	-	1.00
B	Cosphaderm® X 34	✓	Xanthan Gum	Cosphatec GmbH	0.40
B	Gummi Arabicum		Acacia Senegal Gum	-	0.40
C	Cosphaderm® Propanediol natural	✓	Propanediol	Cosphatec GmbH	20.00
C	Cosphaderm® Pentiol natural	✓	Pentylene Glycol	Cosphatec GmbH	5.00
C	Cosphaderm® VBE		Vanillyl Butyl Ether	Cosphatec GmbH	0.30

## MANUFACTURING PROCESS

Phase A: Combine all ingredients of phase A and stir until everything is completely dissolved.

Phase B: Slowly add phase B to A while stirring.

Phase C: Mix all ingredients of phase C and add to phase A+B while stirring.

Adjust the pH to  $5.0 \pm 0.05$ .

## SPECIFICATION

Appearance: Clear solution

pH:  $5.0 \pm 0.05$

Stability: Microbiological stability proven, no separation after centrifugation (4000 rpm, 30 min)

# SCALP PEELING

400.93.1.1

EXFOLIATING. HYDRATING. SOOTHING.

**Alternative preservation: Cosphaderm® Pentiol natural,  
Cosphaderm® Zinc Lactate natural**

Cosphatec

ALL NATURAL  
INGREDIENTS

Phase	Ingredient	COSMOS	INCI	Supplier	%
A	Demin. Water		Aqua	-	85.70
A	Cosphagard® SA natural	✓	Salicylic Acid	Cosphatec GmbH	2.00
B	Glycerin		Glycerin	CREMER OLEO GmbH & Co. KG	3.00
B	D-Panthenol 75 %		Panthenol, Aqua	-	0.50
B	Cosphaderm® Sodium Hyaluronate	✓	Sodium Hyaluronate	Cosphatec GmbH	0.20
B	Cosphaderm® X 34	✓	Xanthan Gum	Cosphatec GmbH	0.20
B	Caffeine Powder		Caffeine	-	1.00
B	Betaine		Betaine	Clariant AG	2.00
B	Cosphaderm® Pentiol natural	✓	Pentylene Glycol	Cosphatec GmbH	5.00
B	Cosphaderm® Zinc Lactate natural	✓	Zinc Lactate	Cosphatec GmbH	0.40

## MANUFACTURING PROCESS

Phase A: Combine the ingredients of phase A. Raise the pH to 11 to dissolve Cosphagard® SA natural. When everything is dissolved, lower the pH back to 4-5 again.

Phase B: Add all ingredients from phase B one after another. Adjust the pH to  $4.0 \pm 0.05$ .

## SPECIFICATION

Appearance: Clear solution

pH:  $4.0 \pm 0.05$

Stability: Microbiological stability proven, no separation after centrifugation (4000 rpm, 30 min)

# CURLING BOOSTER SHAMPOO

Cosphatec

400.82.1.1

CONDITIONING. HYDRATING. VEGAN.

**Alternative preservation: Cosphaderm® Sodium LAAS,  
Cosphaderm® Propanediol natural**

Phase	Ingredient	COSMOS	INCI	Supplier	%
A	Demin. Water		Aqua	-	65.60
A	Cosphaderm® Propanediol natural	✓	Propanediol	Cosphatec GmbH	5.00
A	Cosphaderm® Sodium LAAS	✓	Sodium Levulinate, Sodium Anisate	Cosphatec GmbH	1.00
A	Cosphaderm® X soft	✓	Xanthan Gum	Cosphatec GmbH	0.80
B	Plantacare® 2000 UP		Decyl Glucoside	BASF SE	20.00
C	Cosphaderm® E NGM		Lysolecithin	Cosphatec GmbH	1.00
C	Lanette® O		Cetearyl Alcohol	BASF SE	4.00
C	SOFTISAN® conditionHAIR		PCA Glyceryl Oleate	IOI Oleo GmbH	0.50
C	Cotton Oil		Gossypium Herbaceum Seed Oil	Gustav Heess GmbH	2.00
C	Cosphaderm® T-70 NON GMO		Tocopherol, Helianthus Annuus Seed Oil	Cosphatec GmbH	0.10

## Manufacturing Process

Phase A: Combine all ingredients of phase A and stir until everything is dissolved.

Phase B: Slowly add phase B to phase A under stirring. Stir until complete dissolution.

Adjust pH to  $5.5 \pm 0.05$  and heat phase A and B to 70 °C.

Phase C: Combine all ingredients and heat phase C to 70 °C. Add then phase C to phase A and B under strong stirring and homogenise the formulation.

Adjust pH to  $5.2 \pm 0.05$ .

## Specification

Appearance: Slightly yellowish gel cream

pH:  $5.2 \pm 0.05$

Stability: Microbiological stability proven, no separation after centrifugation (4000 rpm, 30 min)

# LEAVE-IN HAIR CREAM

400.91.1.1

CONDITIONING. HYDRATING. ANTI-FRIZZ.

**Alternative preservation: Cosphaderm® Absolute,  
Cosphaderm® Octiol natural**

Cosphatec

ALL NATURAL  
INGREDIENTS

Phase	Ingredient	COSMOS	INCI	Supplier	%
A	Demin. Water		Aqua	-	52.00
A	Inulin		Inulin	-	1.00
A	Cosphaderm® X 34	✓	Xanthan Gum	Cosphatec GmbH	0.25
A	Sclerotium Gum		Sclerotium Gum	-	0.25
B	Cosphaderm® Absolute	✓	Propanediol, Sodium Lactate, Betaine, Aqua	Cosphatec GmbH	20.00
C	Imwitor® 372P		Glyceryl Stearate Citrate	IOI Oleo GmbH	2.50
C	Lanette® O		Cetearyl Alcohol	BASF SE	4.00
C	Stearic Acid		Stearic Acid	-	2.00
C	Shea Butter refined		Butyrospermum Parkii Butter	Gustav Heess GmbH	7.00
C	Cosphaderm® Octiol natural	✓	Caprylyl Glycol	Cosphatec GmbH	0.30
C	Argan Oil		Argania Spinosa Kernel Oil	Gustav Heess GmbH	3.00
C	Cosphaderm® Feel	✓	Triheptanoin	Cosphatec GmbH	3.00
C	MCT Oil Typ V Ph. Eur.		Caprylic/Capric Triglyceride	Gustav Heess GmbH	4.00
C	SOFTISAN® conditionHAIR		PCA Glyceryl Oleate	IOI Oleo GmbH	0.50
C	Cosphaderm® T-70 NON GMO ECO	✓	Tocopherol, Helianthus Annuus Seed Oil	Cosphatec GmbH	0.20

## MANUFACTURING PROCESS

Phase A: Combine all ingredients of phase A and stir until everything is completely dissolved.

Phase B: Add phase B to A while stirring. Then heat phase A+B to 75 °C.

Phase C: Combine all ingredients of phase C and heat to 75 °C. Then add phase C to phase A+B under strong stirring and homogenise the formulation.

Adjust the pH to 4.5 ± 0.05.

## SPECIFICATION

Appearance: White cream

pH: 4.5 ± 0.05

Stability: Microbiological stability proven, no separation after centrifugation (4000 rpm, 30 min)

# INTENSE REPAIR HAIR MASK

Cosphatec

400.85.1.1

CONDITIONING. SMOOTHING. GLOSSY.

**Alternative preservation: Cosphaderm® Octiol natural, Cosphaderm® Sodium LAAS**

ALL NATURAL  
INGREDIENTS

Phase	Ingredient	COSMOS	INCI	Supplier	%
A	Demin. Water		Aqua	-	75.90
A	Glycerin		Glycerin	CREMER OLEO GmbH & Co. KG	5.00
A	Betaine		Betaine	-	2.00
A	Cosphaderm® Sodium LAAS	✓	Sodium Levulinate, Sodium Anisate	Cosphatec GmbH	0.70
A	Cosphaderm® Octiol natural	✓	Caprylyl Glycol	Cosphatec GmbH	0.50
A	Cosphaderm® X 34	✓	Xanthan Gum	Cosphatec GmbH	0.20
B	Cosphaderm® SF-75H	✓	Hydrogenated Lecithin	Cosphatec GmbH	1.00
C	Lanette®N		Cetearyl Alcohol, Sodium Cetearyl Sulfate	BASF SE	2.50
C	Lanette® O		Cetearyl Alcohol	BASF SE	2.00
C	Shea Butter refined		Butyrospermum Parkii Butter	Gustav Heess GmbH	2.00
C	Coconut Oil		Coco Nucifera Oil	Gustav Heess GmbH	3.00
C	Argan Oil		Argania Spinosa Kernel Oil	Gustav Heess GmbH	2.00
C	Cosphaderm® Feel	✓	Triheptanoin	Cosphatec GmbH	1.50
C	Broccoli Seed Oil		Brassica Oleracea Seed Oil	-	1.00
C	SOFTISAN® conditionHAIR		PCA Glyceryl Oleate	IOI Oleo GmbH	0.50
C	Cosphaderm® T-70 NON GMO ECO	✓	Tocopherol, Helianthus Annuus Seed Oil	Cosphatec GmbH	0.20

## MANUFACTURING PROCESS

Phase A: Combine all ingredients of phase A and stir until everything is completely dissolved.

Phase B: Add Cosphaderm® SF-75H to phase A and let it soak for 10-20 minutes. Then heat phase A+B to 70 °C.

Phase C: Combine all ingredients of phase C and heat to 70 °C. Add then phase C to phase A+B under strong stirring and homogenise the formulation.

Adjust the pH to 5.0 ± 0.05.

## SPECIFICATION

Appearance: Light beige gel cream

pH: 5.0 ± 0.05

Stability: Microbiological stability proven, no separation after centrifugation (4000 rpm, 30 min)

## CURRENT TRENDS

### BODYCARE

## CLEAN BEAUTY

This trend is based on a consumer desire for cosmetics products that are free from any controversial or critical ingredients. This applies to both synthetic and natural ingredients for skin and haircare. The trend originated in the USA, where fewer cosmetics regulations are applied to the market and the need for transparency is therefore ever increasing. **Clean Beauty** does not mean that a product is better or more compatible, but rather that certain listed ingredients are avoided in the product. Clean Beauty is often associated with vegan skin care. However, there is no guarantee for this, as the term "clean" has no standard definition or protection. If a product does not contain any animal-based ingredients or is not animal-tested, this is stated separately. Clean Beauty is therefore not to be equated with the term "natural cosmetics", which predominantly consist of plant-based ingredients and are certified with different seals. But what the two trends have in common is this: less is more!

#### Did you know?

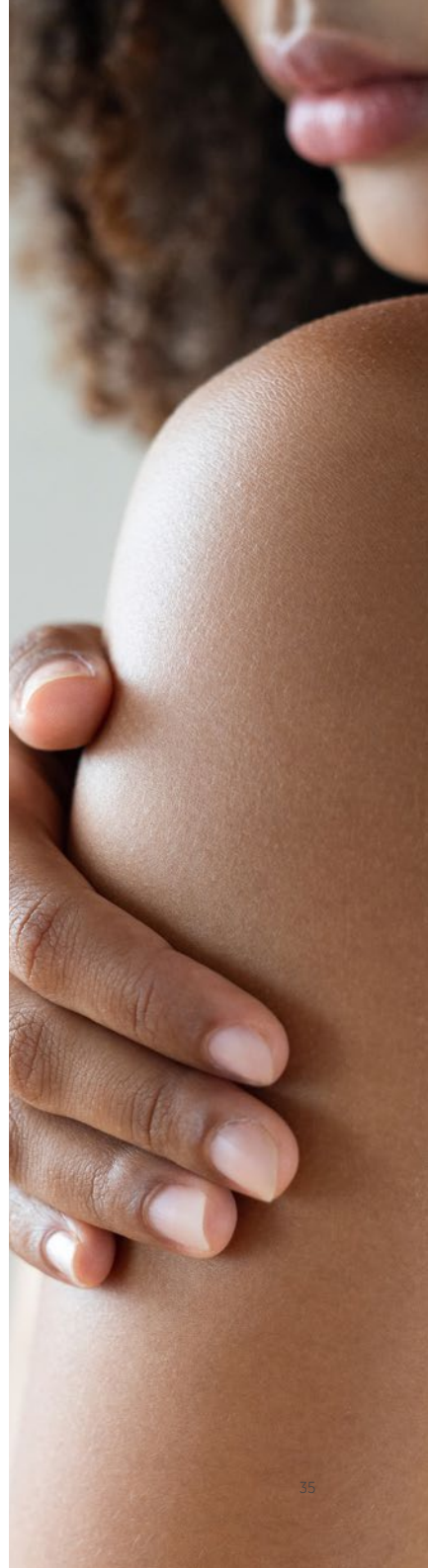
The best of both worlds: our product portfolio consists of numerous natural and vegan ingredients, which are also able to unfurl their full antimicrobial effect in a low concentration in all kinds of formulations. We are constantly expanding our portfolio while adhering to our principles of efficacy, skin tolerance and naturalness. We use these ingredients to regularly create new formulations in line with the latest trends in the cosmetics industry.

Have you heard of our hybrid shampoo bar formulation? You can also use it as a solid shower bar.

Watch the video with our formulation instructions here:



[cosphatec.com/video/shampooobar](https://cosphatec.com/video/shampooobar)



# DEODORANT CREAM

200.76.1.1

VEGAN. REFRESHING. NOURISHING.

**Alternative preservation: Cosphaderm® GMCY, Cosphaderm® Zinc Lactate natural**

Cosphatec

ALL NATURAL  
INGREDIENTS

Phase	Ingredient	COSMOS	INCI	Supplier	%
A	Ecorol® 16/98 P		Cetyl Alcohol	Ecogreen Oleochemicals	10.50
A	Candelilla Wax		Euphorbia Cerifera (Candelilla) Wax	-	7.20
A	Shea Butter refined		Butyrospermum Parkii Butter	Gustav Heess GmbH	10.00
A	Cocoa Butter		Theobroma Cacao Seed Butter	Gustav Heess GmbH	10.00
A	MCT Oil Typ V Ph. Eur.		Caprylic/Capric Triglyceride	Gustav Heess GmbH	17.50
A	Almond Oil		Prunus Amygdalus Dulcis Oil	Gustav Heess GmbH	4.00
A	Cosphaderm® GMCY	✓	Glyceryl Caprylate	Cosphatec GmbH	1.00
B	Cosphaderm® T-70 NON GMO ECO	✓	Tocopherol, Helianthus Annuus Seed Oil	Cosphatec GmbH	0.30
B	Cosphaderm® Zinc Lactate natural	✓	Zinc Lactate	Cosphatec GmbH	2.00
B	Sodium Bicarbonate		Sodium Bicarbonate	-	8.00
B	Corn Starch		Zea Mays Starch	-	29.50

## MANUFACTURING PROCESS

Combine all ingredients of phase A, heating to 75 °C. When everything has melted, add phase B. Take off heat and fill into packaging.

## SPECIFICATION

Appearance: Solid, yellowish balm

Stability: Microbiological stability proven (Water activity value less than 0.75)

# RICH & SOFT HANDCREAM

Cosphatec

200.4.1.2

REGENERATING. SOFT SKIN FEEL.  
MOISTURISING.

ALL NATURAL  
INGREDIENTS

Alternative preservation: Cosphaderm® MultiMEG

Phase	Ingredient	COSMOS	INCI	Supplier	%
A	Demin. Water		Aqua	-	76.55
A	Glycerin		Glycerin	CREMER OLEO GmbH & Co. KG	2.00
A	Cosphaderm® X 34	✓	Xanthan Gum	Cosphatec GmbH	0.25
B	Lamecreme		Glyceryl Stearate, Glyceryl Stearate Citrate	-	2.50
B	Montanov™ 68		Cetearyl Alcohol, Cetearyl Glucoside	SEPPIC, S.A.	2.00
B	Tegomuls		Hydrogenated Palm Glyceride	-	0.50
B	Ecorol® 18/98 P		Cetyl Alcohol	Ecogreen Oleochemicals	1.00
B	Beeswax		Cera alba	Gustav Heess GmbH	0.50
B	Carnauba Wax		Copernicia Cerifera Cera	Gustav Heess GmbH	1.00
B	Shea Butter refined		Butyrospermum Parkii Butter	Gustav Heess GmbH	3.00
B	Sunflower Oil		Helianthus Annuus Seed Oil	Gustav Heess GmbH	3.00
B	Peach Kernel Oil		Prunus Persica Kernel Oil	Gustav Heess GmbH	1.50
B	Jojoba Oil		Simmondsia Chinensis Seed Oil	Gustav Heess GmbH	2.50
B	Cosphaderm® T-70 NON GMO		Tocopherol, Helianthus Annuus Seed Oil	Cosphatec GmbH	0.30
B	Cosphaderm® AP	✓	Ascorbyl Palmitate	Cosphatec GmbH	0.20
B	Cosphaderm® Feel	✓	Triheptanoin	Cosphatec GmbH	2.00
C	Cosphaderm® MultiMEG	✓	Glyceryl Caprylate, Pentylene Glycol, Magnolia Officinalis Bark Extract	Cosphatec GmbH	1.20

## Manufacturing Process

Phase A: Mix all ingredients together. Slowly add Cosphaderm® X 34 while stirring. Then heat to 80 °C.

Phase B: Combine all ingredients and heat to 80 °C.

Add phase B to phase A and homogenise.

Phase C: Add Cosphaderm® MultiMEG below 40 °C while stirring.

Adjust the pH to 5.5 ± 0.05.

## Specification

Appearance: White, shiny emulsion

pH: 5.5 ± 0.05

Stability: Microbiological stability proven, no separation after centrifugation (4000 rpm, 30 min)



# WARMING FOOTCREAM

Cosphatec

200.36.1.1

WARMING. BOOSTING BLOOD CIRCULATION.  
NOURISHING.

**Alternative preservation: Cosphaderm® Propanediol natural,  
Cosphaderm® Magnolia Extract 98, Cosphaderm® GMCY**

Phase	Ingredient	COSMOS	INCI	Supplier	%
A	Demin. Water		Aqua	-	45.10
A	Glycerin		Glycerin	CREMER OLEO GmbH & Co. KG	3.00
A	Cosphaderm® Propanediol natural	✓	Propanediol	Cosphatec GmbH	3.00
A	Urea		Urea	-	10.00
A	Cosphaderm® X 34	✓	Xanthan Gum	Cosphatec GmbH	0.30
B	Cosphaderm® Feel	✓	Triheptanoin	Cosphatec GmbH	8.00
B	Lanette® O		Cetearyl Alcohol	BASF SE	3.00
B	Shea Butter refined		Butyrospermum Parkii Butter	Gustav Heess GmbH	8.00
B	Carnauba Wax		Copernicia Cerifera Cera	Gustav Heess GmbH	5.00
B	Beeswax		Cera alba	Gustav Heess GmbH	8.00
B	Cosphaderm® VBE		Vanillyl Butyl Ether	Cosphatec GmbH	0.50
B	Cosphaderm® GMCY	✓	Glyceryl Caprylate	Cosphatec GmbH	0.80
B	Cosphaderm® Magnolia Extract 98	✓	Magnolia Officinalis Bark Extract	Cosphatec GmbH	0.30
B	Lamecreme		Glyceryl Stearate, Glyceryl Stearate Citrate	-	5.00

## Manufacturing Process

Phase A: Combine all ingredients of phase A. Slowly add Cosphaderm® X 34 to phase A and stir until completely dissolved.

Phase B: Combine all ingredients of phase B. Heat both phases separately to 80-82 °C. Add then phase B to phase A under strong stirring and homogenise the formulation. Adjust pH to 5.5 ± 0.05.

## Specification

Appearance: Shiny, white cream

pH: 5.5 ± 0.05

Stability: Microbiological stability proven, no separation after centrifugation (4000 rpm, 30 min)

# IN-SHOWER BODY LOTION

200.51.2.1

LIGHT SKIN FEEL. HIGH SPREADABILITY.  
MOISTURISING.

**Preservation: Cosphagard® Pol, Cosphaderm® Pentiol natural**

Cosphatec

ALL NATURAL  
INGREDIENTS

Phase	Ingredient	COSMOS	INCI	Supplier	%
A	Demin. Water		Aqua	-	74.40
A	Glycerin		Glycerin	CREMER OLEO GmbH & Co. KG	2.00
A	Cosphaderm® X 34	✓	Xanthan Gum	Cosphatec GmbH	0.60
A	Cosphagard® Pol	✓	Aqua, Sodium Levulinate, Potassium Sorbate	Cosphatec GmbH	2.00
A	Cosphaderm® Pentiol natural	✓	Pentylene Glycol	Cosphatec GmbH	2.00
B	Sunflower Oil		Helianthus Annuus Seed Oil	Gustav Heess GmbH	4.00
B	Shea Butter refined		Butyrospermum Parkii Butter	Gustav Heess GmbH	4.00
B	MCT Oil Typ V Ph. Eur.		Caprylic/Capric Triglyceride	Gustav Heess GmbH	3.00
B	SOFTISAN® conditionHAIR		PCA Glyceryl Oleate	IOI Oleo GmbH	1.00
B	Macadamia Nut Oil		Macadamia Ternifolia Seed Oil	Gustav Heess GmbH	2.00
B	Softisan® 100		Hydrogenated Coco Glycerides	IOI Oleo GmbH	2.00
B	Ecorol® 16/98 P		Cetyl Alcohol	Ecogreen Oleochemicals	1.00
B	Imwitor® 372P		Glyceryl Stearate Citrate	IOI Oleo GmbH	2.00

## Manufacturing Process

Phase A: Combine all ingredients of phase A under stirring and stir until Cosphaderm® X 34 is completely dissolved.

Phase B: Combine all ingredients of phase B. Heat both phases separately to 70 °C and add phase B to phase A under stirring.

Homogenise the formulation and adjust the pH to  $5.5 \pm 0.05$ .

## Specification

Appearance: White, shiny emulsion

pH:  $5.5 \pm 0.05$

Stability: Microbiological stability proven, no separation after centrifugation (4000 rpm, 30 min)

# UREA BODY LOTION

Cosphatec

200.52.2.1

DEEPLY MOISTURISING. SKIN CONDITIONING.  
HYDRATING.

**Preservation: Cosphagard® Cap**

Phase	Ingredient	COSMOS	INCI	Supplier	%
A	Demin. Water		Aqua	-	75.50
A	Glycerin		Glycerin	CREMER OLEO GmbH & Co. KG	4.00
A	Ronacare® Allantoin		Allantoin	Merck KGaA	0.50
A	Cosphagard® Cap		Caprylyl Glycol, Phenoxyethanol	Cosphatec GmbH	1.00
A	Cosphaderm® X 34	✓	Xanthan Gum	Cosphatec GmbH	0.50
A	Urea		Urea	-	5.00
B	Ecorol® 16/98 P		Cetyl Alcohol	Ecogreen Oleochemicals	3.00
B	Shea Butter refined		Butyrospermum Parkii Butter	-	2.00
B	Sunflower Oil		Helianthus Annuus Seed Oil	Gustav Heess GmbH	3.00
B	MCT Oil Typ V Ph. Eur.		Caprylic/Capric Triglyceride	Gustav Heess GmbH	4.00
B	Imwitor® 372P		Glyceryl Stearate Citrate	IOI Oleo GmbH	1.50

## Manufacturing Process

Phase A: Combine all ingredients of phase A and stir until everything is completely dissolved.

Phase B: Combine all ingredients of phase B. Heat both phases separately to 70 °C and add phase B to phase A while stirring. After stirring for 5 minutes, homogenise the formulation.

Adjust the pH to  $5.5 \pm 0.05$ .

## Specification

Appearance: White, shiny emulsion

pH:  $5.5 \pm 0.05$

Stability: Microbiological stability proven, no separation after centrifugation (4000 rpm, 30 min)

# MOISTURISING BODY YOGHURT

Cosphatec

200.9.1.1

HIGH SPREADABILITY. LIGHT SKIN FEEL.  
SOFTENING.

**Alternative preservation: Cosphaderm® Dicapo**

Phase	Ingredient	COSMOS	INCI	Supplier	%
A	Cosphaderm® Feel	✓	Triheptanoin	Cosphatec GmbH	13.00
A	Cosphaderm® T-70 NON GMO		Tocopherol, Helianthus Annuus Seed Oil	Cosphatec GmbH	0.20
A	Imwitor® 375		Glyceryl Citrate, Lactate, Lineolate, Oleate	IOI Oleo GmbH	0.50
A	Glycerin		Glycerin	CREMER OLEO GmbH & Co. KG	3.00
B	Demin. Water		Aqua	-	81.80
B	Cosphaderm® Sodium Hyaluronate	✓	Sodium Hyaluronate	Cosphatec GmbH	0.50
B	Carbopol® Ultrez-21		Acrylates/C10-30 Alkyl Acrylate Crosspolymer	Lubrizol	0.30
B	Cosphaderm® Dicapo		Caprylyl Glycol, Glyceryl Caprylate, Dipropylene Glycol	Cosphatec GmbH	0.70

## Manufacturing Process

Phase A: Combine all ingredients of phase A.

Phase B: Combine all ingredients of phase B while stirring. Add phase A into phase B and homogenise until everything is dissolved. Adjust the pH to  $6.5 \pm 0.05$ .

## Specification

Appearance: White cream

pH:  $6.5 \pm 0.05$

Stability: Microbiological stability proven, no separation after centrifugation (4000 rpm, 30 min)

## CLEANSING

### TEXTURES & GENTLE CLEANSING

The rising sales of wellness products are also boosting customers' desires for exciting yet velvety textures. The spectrum of cosmetic product textures no longer ends at "creamy". Instead, it ranges from fluffy, powdery, fluid and gel-like to solid. This is particularly prominent on the trend market in South Korea, where innovative textures are experiencing a boom. One example is the so-called "cloud texture", which refers to weightless, fluffy cosmetics that melt on the skin, and transformative textures such as bubble masks. In Europe, the trend is moving towards solid or powdery products as well as gently melting oil make-up removers.

#### Did you know?

Our Balm to Milk Cleanser covers several texture trends in one.

Firstly, the formulation has an oleogel texture, which not only feels wonderful, but also looks spectacular. As a transformative texture, once it comes into contact with water it is transformed into a velvety milk with a pleasantly melting texture on the skin, without leaving the skin dehydrated. Want to know more? Enjoy some direct insights from our texture miracle in this video:

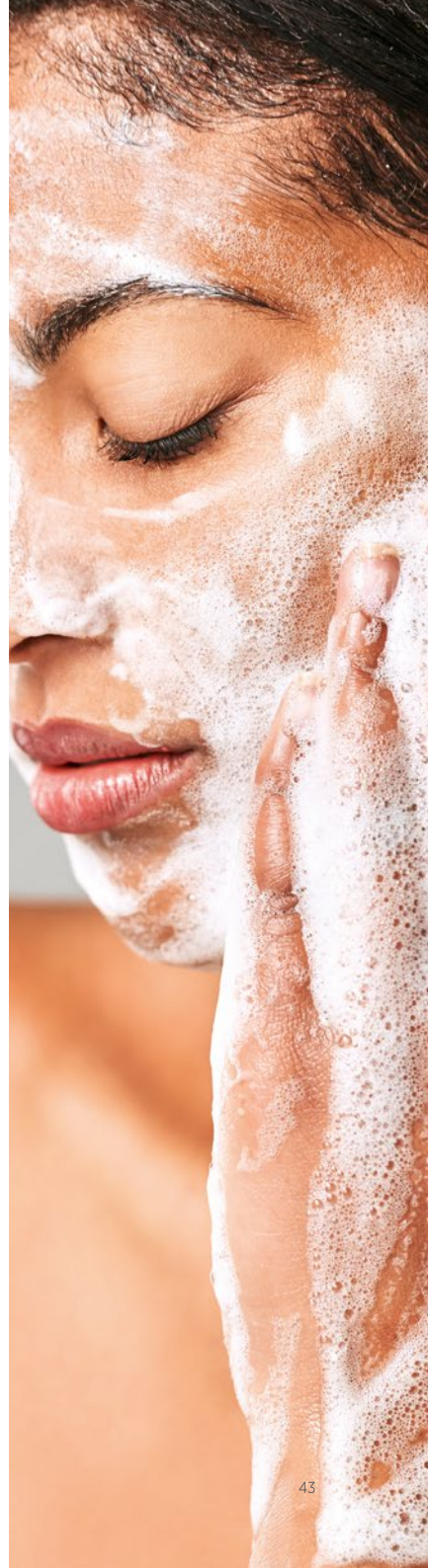


[cosphatec.com/video/balm-to-milk-cleanser](https://cosphatec.com/video/balm-to-milk-cleanser)

We offer our customers transparent exchange of knowledge – even in the form of formulation hacks. Here, for example, we show you how to avoid turbidity due to incompatibilities in order to obtain a stable, clear product!



[cosphatec.com/video/  
formulation-hacks-for-surfactants-and-zinc-lactate](https://cosphatec.com/video/formulation-hacks-for-surfactants-and-zinc-lactate)



# SOFT CLEANSING FOAM

300.83.1.1

Cosphatec

GENTLE CLEANSING. REFRESHING. SOOTHING.

**Alternative preservation: Cosphaderm® GeMix, Cosphaderm® Pentiol natural, Cosphaderm® Propanediol natural**

ALL NATURAL  
INGREDIENTS

Phase	Ingredient	COSMOS	INCI	Supplier	%
A	Demin. Water		Aqua	-	83.40
A	Cosphaderm® Pentiol natural	✓	Pentylene Glycol	Cosphatec GmbH	3.00
A	Cosphaderm® PA ECONAT	✓	Phytic Acid, Aqua	Cosphatec GmbH	0.10
A	Cosphaderm® Propanediol natural	✓	Propanediol	Cosphatec GmbH	3.00
A	D-Panthenol 75 %		Panthenol, Aqua	-	1.00
B	Cosphaderm® X 34	✓	Xanthan Gum	Cosphatec GmbH	0.10
B	Cosphaderm® Sodium Hyaluronate	✓	Sodium Hyaluronate	Cosphatec GmbH	0.10
C	Plantacare® 818 UP		Coco Glucoside	BASF SE	4.00
C	Perlastan® SC		Sodium/Disodium Cocoyl Glutamate	Schill + Seilacher Struktol GmbH	4.00
C	SOFTISAN® conditionHAIR		PCA Glyceril Oleate	IOI Oleo GmbH	0.50
C	Cosphaderm® GeMix		Glyceril Caprylate, Glyceril Undecylenate	Cosphatec GmbH	0.80

## Manufacturing Process

Phase A: Combine all ingredients of phase A and stir until everything is dissolved.

Phase B: Add phase B to phase A under stirring.

Phase C: Combine all ingredients of phase C separately. Add then phase C to phase A and B under stirring.

Adjust pH to  $5.5 \pm 0.05$ .

## Specification

Appearance: Transparent solution

pH:  $5.5 \pm 0.05$

Stability: Microbiological stability proven, no separation after centrifugation (4000 rpm, 30 min)

# BALM TO MILK FACIAL CLEANSER

Cosphatec

300.81.1.1

GENTLE CLEANSING. MAKE-UP REMOVING.  
VEGAN.

ALL NATURAL  
INGREDIENTS

Alternative preservation: Cosphaderm® MultiMEG

Phase	Ingredient	COSMOS	INCI	Supplier	%
A	Glycerin		Glycerin	CREMER OLEO GmbH & Co. KG	40.00
A	Sucrose Stearate		Sucrose Stearate	-	3.00
B	MCT Oil Typ V Ph. Eur.		Caprylic/Capric Triglyceride	Gustav Heess GmbH	35.50
B	Argan Oil		Argania Spinosa Kernel Oil	Gustav Heess GmbH	20.00
B	Cosphaderm® T-70 NON GMO ECO	✓	Tocopherol, Helianthus Annuus Seed Oil	Cosphatec GmbH	0.50
C	Cosphaderm® MultiMEG	✓	Glyceryl Caprylate, Pentylene Glycol, Magnolia Officinalis Bark Extract	Cosphatec GmbH	1.00

## Manufacturing Process

Phase A: Combine all ingredients of phase A and stir until everything is completely dissolved.

Phase B: Combine all ingredients of phase B.

Heat both phases separately to 70-75 °C and add phase B to A very slowly while homogenising.

Phase C: Cool down to 40°C and add Phase C.

## Specification

Appearance: Slightly yellowish gel

Stability: Microbiological stability proven (Water activity value less than 0.75)

# NATURAL PEELING GEL

300.95.1.1

NATURAL PEELING BEADS. REFINING.  
CLEANSING.

**Alternative preservation: Cosphaderm® Sodium LAAS,  
Cosphaderm® Propanediol natural**

Cosphatec

ALL NATURAL  
INGREDIENTS

Phase	Ingredient	COSMOS	INCI	Supplier	%
A	Demin. Water		Aqua	-	81.00
A	Cosphaderm® X 34	✓	Xanthan Gum	Cosphatec GmbH	1.00
A	Potassium Chloride		Potassium Chloride	-	1.00
A	Glycerin		Glycerin	CREMER OLEO GmbH & Co. KG	3.50
A	Sorbitol		Sorbitol	-	2.00
A	Cosphaderm® Sodium LAAS	✓	Sodium Anisate, Sodium Levulinate	Cosphatec GmbH	1.00
A	D-Panthenol 75 %		Panthenol, Aqua	-	0.50
A	Cosphaderm® Propanediol natural	✓	Propanediol	Cosphatec GmbH	5.00
B	Plantacare® 2000 UP		Decyl Glucoside	BASF SE	4.00
C	WorléeBeads Jojoba 20/60		Hydrogenated Jojoba Oil	Worlée-Chemie GmbH	1.00

## MANUFACTURING PROCESS

Phase A: Combine all ingredients of phase A and stir until everything is completely dissolved.

Phase B: Add phase B to A carefully to avoid foaming.

Adjust the pH to  $5.5 \pm 0.05$ .

Phase C: Add phase C to the final formulation while stirring.

## SPECIFICATION

Appearance: Transparent gel with small peeling beads

pH:  $5.5 \pm 0.05$

Stability: Microbiological stability proven, no separation after centrifugation (4000 rpm, 30 min)



# NATURAL JELLY SOAP

300.96.1.1

MILD. CLEANSING. FOAMING.

**Alternative preservation: Cosphaderm® Pentiol natural, Cosphaderm® Sodium LAAS**

Cosphatec

ALL NATURAL  
INGREDIENTS

Phase	Ingredient	COSMOS	INCI	Supplier	%
A	Glycerin		Glycerin	CREMER OLEO GmbH & Co. KG	5.00
A	Cosphaderm® Pentiol natural	✓	Pentylene Glycol	Cosphatec GmbH	3.00
A	Cosphaderm® KG	✓	Amorphophallus Konjac Root Extract	Cosphatec GmbH	0.50
A	Cosphaderm® X 34	✓	Xanthan Gum	Cosphatec GmbH	0.50
B	Demin. Water		Aqua	-	69.50
B	Perlastan® SC		Sodium/Disodium Cocoyl Glutamate	Schill + Seilacher Struktol GmbH	8.00
B	Plantacare® 818 UP		Coco Glucoside	BASF SE	12.00
B	SOFTISAN® conditionHAIR		PCA Glyceryl Oleate	IOI Oleo GmbH	0.50
C	Cosphaderm® Sodium LAAS	✓	Sodium Levulinate, Sodium Anisate	Cosphatec GmbH	1.00

## MANUFACTURING PROCESS

Phase A: Combine all ingredients of phase A and stir until dispersed.

Phase B: Prepare phase B and lower the pH to - 5.5.

Add phase C and phase A to phase B.

Adjust the pH to  $5.5 \pm 0.05$ .

Heat the prepared solution to 80 – 90 °C and stir at this temperature for 2 – 3 min.

Quickly pour the warm mixture into moulds and let it cool down.

## SPECIFICATION

Appearance: Clear, solid, elastic jelly

pH:  $5.5 \pm 0.05$

Stability: Microbiological stability proven, no separation after centrifugation (4000 rpm, 30 min)

# GENTLE SKIN PERFECTING SCRUB

Cosphatec

300.15.3.1

MILD. NATURALLY ACTIVE AGAINST ACNE.  
CLEANSING.

ALL NATURAL  
INGREDIENTS

**Alternative preservation: Cosphaderm® LA-T, Cosphaderm® Sodium pAS natural, Cosphaderm® Pentiol natural**

Phase	Ingredient	COSMOS	INCI	Supplier	%
A	Demin. Water		Aqua	-	71.25
A	Glycerin		Glycerin	CREMER OLEO GmbH & Co. KG	4.00
A	Cosphaderm® PA ECONAT	✓	Phytic Acid, Aqua	Cosphatec GmbH	0.10
A	Cosphaderm® Sodium pAS natural	✓	Sodium Anisate	Cosphatec GmbH	0.20
A	Cosphaderm® LA-T	✓	Levulinic Acid, Glycerin, Sodium Levulinate, Aqua	Cosphatec GmbH	1.00
A	Cosphagard® SA natural	✓	Salicylic Acid	Cosphatec GmbH	1.00
A	Cosphaderm® Pentiol natural	✓	Pentylene Glycol	Cosphatec GmbH	3.00
B	Cosphaderm® X 34	✓	Xanthan Gum	Cosphatec GmbH	1.00
C	Perlastan® SC		Disodium/Sodium Cocoyl Glutamate	Schill + Seilacher Struktol GmbH	10.30
C	Cosphaderm® Magnolia Extract 98	✓	Magnolia Officinalis Bark Extract	Cosphatec GmbH	0.05
C	Plantacare® 1200 UP		Lauryl Glucoside	BASF SE	6.60
D	WorléeBeads		Hydrogenated Jojoba Oil	Worlée-Chemie GmbH	1.50

## Manufacturing Process

Phase A: Combine all ingredients of phase A. Raise the pH to 11 to dissolve Cosphagard® SA natural. When everything is dissolved, lower the pH back to 5-6 again.

Phase B: Add Cosphaderm® X 34 to phase A and stir until everything is completely dissolved.

Phase C: Combine all ingredients of phase C separately. Add then phase C to phase A+B.

Phase D: Add the last phase to the finished formulation. Adjust the pH to  $5.5 \pm 0.05$ .

## Specification

Appearance: Translucent gel with small peeling beads

pH:  $5.5 \pm 0.05$

Stability: Microbiological stability proven, no separation after centrifugation (4000 rpm, 30 min)

Disclaimer: This information and our technical application advice are given to the best of our knowledge, but it is for information purposes only and no responsibility is assumed.

# ALOE VERA MICELLAR WATER

300.12.3.1

DEEP CLEANSING. REFRESHING. MAKE-UP REMOVING.

**Alternative preservation: Cosphaderm® Sodium LAAS, Cosphaderm® Propanediol natural, Cosphaderm® Pentiol natural**

Cosphatec

ALL NATURAL  
INGREDIENTS

Phase	Ingredient	COSMOS	INCI	Supplier	%
A	Demin. Water		Aqua	-	63.50
A	Aloe Vera Juice 100 %		Aloe Barbadensis Leaf Juice	-	20.00
A	Cosphaderm® Propanediol natural	✓	Propanediol	Cosphatec GmbH	5.00
A	Cosphaderm® Pentiol natural	✓	Pentylene Glycol	Cosphatec GmbH	1.00
A	Glycerin		Glycerin	CREMER OLEO GmbH & Co. KG	5.00
A	Cosphaderm® PA ECONAT	✓	Phytic Acid, Aqua	Cosphatec GmbH	0.10
A	Cosphaderm® Sodium LAAS	✓	Sodium Levulinate, Sodium Anisate	Cosphatec GmbH	1.60
B	Plantacare® 2000 UP		Decyl Glucoside	BASF SE	3.80

## Manufacturing Process

Phase A: Combine all ingredients of phase A.

Phase B: Add phase B to A carefully to avoid foaming.

Adjust the pH to  $5.5 \pm 0.05$ .

## Specification

Appearance: Transparent solution

pH:  $5.5 \pm 0.05$

Stability: Microbiological stability proven, no separation after centrifugation (4000 rpm, 30 min)

# SOOTHING 2IN1 MAKE-UP REMOVER

Cosphatec

300.11.1.1

SOOTHING. MAKE-UP REMOVING. CLEANSING.

**Alternative preservation: Cosphaderm® Hexiol, Cosphaderm® Pentiol GL**

Phase	Ingredient	COSMOS	INCI	Supplier	%
A	Demin. Water		Aqua	-	70.35
A	Glycerin		Glycerin	CREMER OLEO GmbH & Co, KG	5.00
A	Cosphaderm® PA ECONAT	✓	Phytic Acid, Aqua	Cosphatec GmbH	0.10
A	Plantacare® 2000 UP		Decyl Glucoside	BASF SE	0.30
B	Cosphaderm® Hexiol		1,2-Hexanediol	Cosphatec GmbH	1.00
B	Cosphaderm® CHA		Caprylhydroxamic Acid	Cosphatec GmbH	0.15
B	Cosphaderm® Pentiol GL		Pentylene Glycol	Cosphatec GmbH	3.00
C	Cosphaderm® Feel	✓	Triheptanoin	Cosphatec GmbH	20.00
C	Cosphaderm® T-70 NON GMO		Tocopherol, Helianthus Annuus Seed Oil	Cosphatec GmbH	0.10
C	Oil-soluble Colour			-	q.s
C	Perfume		Parfum	-	q.s.

## Manufacturing Process

Phase A: Mix all ingredients of phase A under slow stirring.

Phase B: Mix all ingredients of phase B until everything is completely dissolved and add B to phase A.

Adjust the pH of phase A+B to  $5.5 \pm 0.05$ .

Phase C: Mix all ingredients of phase C and add the mixture to phase A+B without stirring.

## Specification

Appearance: Two-phase system with coloured oil phase on top of translucent water phase

pH:  $5.5 \pm 0.05$

Stability: Microbiological stability proven

# GENTLE BODY WASH

300.73.1.1

NATURAL. FREE OF SLES. MILD CLEANSING.

**Alternative preservation: Cosphaderm® Sodium LAAS**

Cosphatec

ALL NATURAL  
INGREDIENTS

Phase	Ingredient	COSMOS	INCI	Supplier	%
A	Demin. Water		Aqua	-	63.50
A	Sulfopon® 1216 G		Sodium Coco Sulfate	BASF SE	5.50
B	Plantacare® 818 UP		Coco Glucoside, Aqua	BASF SE	15.00
B	Dehyton® K		Cocamidopropyl Betaine, Aqua	BASF SE	5.00
B	Perlastan® SC		Sodium/Disodium Cocoyl Glutamate, Aqua	Schill + Seilacher Struktol GmbH	5.00
C	Cosphaderm® Propanediol natural	✓	Propanediol	Cosphatec GmbH	2.00
C	Sodium PCA		Sodium PCA, Aqua	-	1.00
C	Cosphaderm® Sodium LAAS	✓	Sodium Levulinate, Sodium Anisate	Cosphatec GmbH	1.00
D	Sodium Chloride		Sodium Chloride	-	2.00

## MANUFACTURING PROCESS

Phase A: Dissolve Phase A at 40°C.

Phase B: Combine all ingredients of phase B. Add Phase B to A under stirring.

Phase C: Add all ingredients one by one under moderate speed.

Add phase D to thicken the formulation.

Adjust the pH to  $5.5 \pm 0.05$ .

## SPECIFICATION

Appearance: Slightly yellow, transparent gel

pH:  $5.5 \pm 0.05$

Stability: Microbiological stability proven, no separation after centrifugation (4000 rpm, 30 min)

# BATH BOMB

300.68.1.1

FIZZY. SOOTHING. RELAXING.

**Alternative preservation: Cosphaderm® GMCY**

Cosphatec

ALL NATURAL  
INGREDIENTS

Phase	Ingredient	COSMOS	INCI	Supplier	%
A	Sodium Bicarbonate		Sodium Bicarbonate	-	42.00
A	Citric Acid		Citric Acid	-	21.00
A	Corn Starch		Zea Mays Starch	-	20.00
A	Cosphaderm® X 34	✓	Xanthan Gum	Cosphatec GmbH	0.20
A	BergaSoft SCI 80		Sodium Cocoyl Isethionate	Berg + Schmidt GmbH & Co. KG	2.50
B	Cosphaderm® GMCY	✓	Glyceryl Caprylate	Cosphatec GmbH	0.80
B	Coconut Oil		Coco Nucifera Oil	Gustav Heess GmbH	13.50

## Manufacturing Process

Phase A: Combine all ingredients of phase A.

Phase B: Melt all ingredients of phase B (35-40°C) and add to phase A. Mix until everything is homogeneous.

Press mixture into molds.

## Specification

Appearance: Solid, white bar

Stability: Microbiological stability proven (Water activity value less than 0.75)

# REFRESHING MOUTHWASH

300.80.1.1

NATURAL. MILD. ALCOHOL-FREE.

**Alternative preservation: Cosphaderm® Propanediol natural, Cosphaderm® Zinc Lactate natural**

Cosphatec

ALL NATURAL  
INGREDIENTS

Phase	Ingredient	COSMOS	INCI	Supplier	%
A	Demin. Water		Aqua	-	82.90
A	Glycerin		Glycerin	CREMER OLEO GmbH & Co, KG	5.00
A	Xylitol		Xylitol	-	3.00
A	Cosphaderm® X 34	✓	Xanthan Gum	Cosphatec GmbH	0.05
B	Cosphaderm® Propanediol natural	✓	Propanediol	Cosphatec GmbH	8.00
B	Menthol		Menthol	-	0.05
C	Dehyton® K		Cocamidopropyl Betaine	BASF SE	0.10
C	Cosphaderm® Zinc Lactate natural	✓	Zinc Lactate	Cosphatec GmbH	0.40
C	Potassium Citrate		Potassium Citrate	-	0.50
D	Cosmetic Colour			-	q.s.

## MANUFACTURING PROCESS

Phase A: Combine all ingredients and stir until everything is completely dissolved.

Phase B: Dissolve the menthol in Cosphaderm® Propanediol natural add phase B to phase A under soft stirring.

Phase C: Add all ingredients of phase C and stir until everything is completely dissolved.

Phase D: Add colour if wanted.

Adjust the pH to  $7.0 \pm 0.05$ .

## SPECIFICATION

Appearance: Transparent solution

pH:  $7.0 \pm 0.05$

Stability: Microbiological stability proven, no separation after centrifugation (4000 rpm, 30 min)

### BABY-CARE

## SUSTAINABILITY & NATURALNESS

While the baby-care sector was long an outsider in the industry, in recent years, numerous online start-ups have contributed to becoming one of the fastest growing sectors. Unlike other areas of the cosmetics industry, the baby-care market is subject to less powerful trends. At the same time, high safety and quality standards for baby and infant products exist, at least in Europe. The thin layer of the skin, the still not fully developed sebaceous and sweat glands, the lack of fat film on the skin and the instable acid mantle make the skin extremely sensitive and prone to irritation. Nevertheless, for years, there has been a focus on using gentle, skin-friendly, fragrance-free products with few ingredients. At the same time, the trend towards the use of sustainable packaging methods (zero-waste packaging) and sustainable ingredients, including natural cosmetics, has now also reached the youngest target group.

#### Did you know?

Separate labels, an eco-friendly design or refraining from specific ingredients: all these terms are associated with natural cosmetics. But how can these be precisely identified? We've summarised the key features of natural cosmetics here.

Here you can go directly to the article:



[cosphatec.com/how-to-identify-natural-cosmetics](https://cosphatec.com/how-to-identify-natural-cosmetics)





# CALENDULA BABY LOTION

500.63.1.1

SOOTHING. SOFTENING. SOFT TEXTURE.

**Alternative preservation: Cosphaderm® TOM**

Cosphatec

ALL NATURAL  
INGREDIENTS

Phase	Ingredient	COSMOS	INCI	Supplier	%
A	Demin. Water		Aqua	-	68.65
A	Glycerin		Glycerin	CREMER OLEO GmbH & Co. KG	5.00
A	Ronacare® Allantoin		Allantoin	Merck KGaA	0.30
A	Cosphaderm® X 34	✓	Xanthan Gum	Cosphatec GmbH	0.30
A	Cosphaderm® EGCg ECONAT	✓	Camellia Sinensis Leaf Extract	Cosphatec GmbH	0.05
B	PolyAqual®-2W		Polyglyceryl-2 Stearate, Glycerol Stearate, Stearyl Alcohol	Innovacos	4.00
B	Softisan® 100		Hydrogenated Coco Glycerides	IOI Oleo GmbH	2.00
B	Sesame Oil		Sesamum Indicum Seed Oil	Gustav Heess GmbH	6.00
B	Almond Oil		Prunus Amygdalus Dulcis Oil	Gustav Heess GmbH	6.00
B	Calendula Oil		Glycine Soja Oil, Calendula Officinalis Flower Extract, Tocopherol	-	5.00
B	Cocoa Butter		Theobroma Cacao Seed Butter	Gustav Heess GmbH	1.00
B	Cosphaderm® T-70 NON GMO ECO	✓	Tocopherol, Helianthus Annuus Seed Oil	Cosphatec GmbH	0.10
C	Cosphaderm® TOM	✓	Pentylene Glycol, Glycerol Caprylate, Glycerol Undecylenate	Cosphatec GmbH	1.60

## MANUFACTURING PROCESS

Phase A: Combine all ingredients of phase A and stir until everything is completely dissolved. Heat phase A to 80°C.

Phase B: Prepare phase B and heat to 80°C. Add phase B to A and homogenise.

Phase C: Add phase C below 40°C to the formulation.

Adjust the pH value to 5.5 ± 0.05.

## SPECIFICATION

Appearance: Light yellowish lotion

pH: 5.5 ± 0.05

Stability: Microbiological stability proven, no separation after centrifugation (4000 rpm, 30 min)

Disclaimer: This information and our technical application advice are given to the best of our knowledge, but it is for information purposes only and no responsibility is assumed.

# MILD & FOAMY BABY SHAMPOO

Cosphatec

500.30.1.1

GENTLE CLEANSING. MILD. VEGAN.

**Alternative preservation: Cosphaderm® Hexiol, Cosphaderm® Pentiol GL, Cosphaderm® Propanediol natural**

Phase	Ingredient	COSMOS	INCI	Supplier	%
A	Demin. Water		Aqua	-	74.00
A	Cosphaderm® Hexiol		1,2-Hexanediol	Cosphatec GmbH	2.50
A	Cosphaderm® Pentiol GL		Pentylene Glycol	Cosphatec GmbH	2.50
A	Cosphaderm® Propanediol natural	✓	Propanediol	Cosphatec GmbH	4.00
A	D-Panthenol 75 %		Panthenol, Aqua	-	1.00
B	Cosphaderm® X 34	✓	Xanthan Gum	Cosphatec GmbH	1.00
C	Plantacare® 818 UP		Coco Glucoside	BASF SE	5.00
C	Plantacare® 2000 UP		Decyl Glucoside	BASF SE	10.00

## Manufacturing Process

Phase A: Combine all ingredients of phase A.

Phase B: Add phase B to phase A while stirring and stir until everything is completely dissolved.

Phase C: Prepare phase C and add to phase A+B under slow stirring to prevent foaming.

Adjust pH to  $5.5 \pm 0.05$ .

## Specification

Appearance: Transparent gel

pH:  $5.5 \pm 0.05$

Stability: Microbiological stability proven, no separation after centrifugation (4000 rpm, 30 min)

# WOUND PROTECTION CREAM

500.97.1.1

SOOTHING. SKIN PROTECTING. GENTLE.

**Alternative preservation: Cosphaderm® Sodium LAAS, Cosphaderm® Pentiol natural, Cosphaderm® GMUD**

Cosphatec

ALL NATURAL  
INGREDIENTS

Phase	Ingredient	COSMOS	INCI	Supplier	%
A	Demin. Water		Aqua	-	63.70
A	D-Panthenol 75 %		Panthenol, Aqua	-	1.00
A	Cosphaderm® Pentiol natural	✓	Pentylene Glycol	Cosphatec GmbH	3.00
A	Cosphaderm® Sodium LAAS	✓	Sodium Levulinate, Sodium Anisate	Cosphatec GmbH	1.20
A	Magnesium Sulfate		Magnesium Sulfate	-	0.70
B	Imwitor® 600		Polyglyceryl-3 Polyricinoleate	IOI Oleo GmbH	3.50
B	Beeswax		Cera alba	-	1.00
B	Shea Butter refined		Butyrospermum Parkii Butter	Gustav Heess GmbH	6.00
B	MCT Oil Typ V Ph. Eur.		Caprylic/Capric Triglyceride	Gustav Heess GmbH	6.00
B	Cosphaderm® GMUD	✓	Glyceryl Undecylenate	Cosphatec GmbH	0.60
B	Almond Oil		Prunus Amygdalus Dulcis Oil	Gustav Heess GmbH	8.00
B	Cosphaderm® T-70 NON GMO ECO	✓	Tocopherol, Helianthus Annuus Seed Oil	Cosphatec GmbH	0.30
B	Zinc Oxide		Zinc Oxide	-	5.00

## MANUFACTURING PROCESS

Phase A: Combine all ingredients of phase A and stir until everything is completely dissolved. Adjust the pH to  $5.5 \pm 0.05$ .

Phase B: Combine all ingredients of phase B.

Heat phase B to 80 °C and slowly add phase A to B while homogenising.

## SPECIFICATION

Appearance: White emulsion

pH:  $5.5 \pm 0.05$

Stability: Microbiological stability proven, no separation after centrifugation (4000 rpm, 30 min)

# BABY BATH

500.31.3.1

GENTLE CLEANSING. MILD. FOAMY.

**Alternative Preservation: Cosphaderm® Pentiol natural, Cosphaderm® GeMix, Cosphaderm® CA natural**

Cosphatec

ALL NATURAL  
INGREDIENTS

Phase	Ingredient	COSMOS	INCI	Supplier	%
A	Demin. Water		Aqua	-	55.70
A	Cosphaderm® CA natural	✓	Cinnamic Acid	Cosphatec GmbH	0.30
B	Cosphaderm® Pentiol natural	✓	Pentylene Glycol	Cosphatec GmbH	2.00
B	Cosphaderm® X 34	✓	Xanthan Gum	Cosphatec GmbH	1.00
C	Cosphaderm® E NGM		Lysolecithin	Cosphatec GmbH	5.00
D	Plantacare® 818 UP		Coco Glucoside	BASF SE	10.00
D	Plantacare® 2000 UP		Decyl Glucoside	BASF SE	25.00
D	Cosphaderm® GeMix	✓	Glyceryl Caprylate, Glyceryl Undecylenate	Cosphatec GmbH	1.00

## Manufacturing Process

Phase A: Combine all ingredients of phase A and raise the pH to 11 under stirring to dissolve Cosphaderm® CA natural. Afterwards, adjust the pH to 5.5 ± 0.05 by adding Citric Acid.

Phase B: Add phase B to phase A and stir until everything is completely dissolved.

Heat phase A+B to 60 °C and add phase C under strong stirring.

Phase D: Add phase D to phase A+B below 40 °C.

Adjust the pH to 5.5 ± 0.05.

## Specification

Appearance: Transparent, yellow gel

pH: 5.5 ± 0.05

Stability: Microbiological stability proven, no separation after centrifugation (4000 rpm, 30 min)

# INDEX

Product Name	Pages
Cosphaderm® Absolute	4, 5, 32
Cosphaderm® AP	37
Cosphaderm® CA natural	59
Cosphaderm® Capo	20
Cosphaderm® CHA	50
Cosphaderm® Dicapo	41
Cosphaderm® Dicapo natural	14, 26
Cosphaderm® EGCg ECONAT	56
Cosphaderm® E NGM	31, 59
Cosphaderm® Feel	11, 13, 20, 23-24, 26, 32, 33, 37, 38, 41, 50
Cosphaderm® GeMix	11, 22, 44, 59
Cosphaderm® GMCY	4, 36, 38, 52
Cosphaderm® GMUD	58
Cosphaderm® Heptiol natural	9, 10
Cosphaderm® Hexiol	50, 57
Cosphaderm® KG	10, 12, 13, 28, 47
Cosphaderm® LA-T	15, 17, 48
Cosphaderm® Magnolia Extract 98	4, 13, 14, 16, 38, 48
Cosphaderm® MultiMEG	23-24, 37, 45
Cosphaderm® Octiol natural	32, 33
Cosphaderm® PA ECONAT	7, 44, 48, 49, 50
Cosphaderm® pAS natural	15, 20
Cosphaderm® Pentiol GL	50, 57
Cosphaderm® Pentiol natural	7, 10, 13, 15, 29, 30, 39, 44, 47, 48, 49, 58, 59
Cosphaderm® Pocal	6, 12
Cosphaderm® Propanediol natural	7, 8, 11, 13, 14, 20, 23-24, 29, 31, 38, 44, 46, 49, 51, 53, 57
Cosphaderm® Sodium LAAS	27, 31, 33, 46, 47, 49, 51, 58
Cosphaderm® SA natural	5, 7, 8, 30, 48
Cosphaderm® SF-75H	4, 13, 14, 17, 27, 28, 33
Cosphaderm® Sodium Hyaluronate	30, 41, 44
Cosphaderm® Sodium Hyaluronate low	6, 9, 10, 14, 17
Cosphaderm® Sodium Hyaluronate high	6, 8, 9, 10, 14
Cosphaderm® Sodium pAS natural	17, 48
Cosphaderm® T-70 NON GMO	16, 23-24, 31, 37, 41, 50
Cosphaderm® T-70 NON GMO ECO	4, 11, 12, 13, 14, 20, 21, 22, 28, 32, 33, 36, 45, 56, 58
Cosphaderm® Tapmix	15, 26
Cosphaderm® TOM	56
Cosphaderm® VBE	29, 38
Cosphaderm® X 34	10, 11, 20, 23-24, 27, 28, 29, 30, 32, 33, 37, 38, 39, 40, 44, 46, 47, 48, 52, 53, 56, 57, 59
Cosphaderm® X soft	4, 8, 9, 14, 17, 31
Cosphaderm® Zinc Lactate natural	8, 11, 27, 28, 30, 36, 53
Cosphagard® Cap	40
Cosphagard® Pol	39

# STAY UP TO DATE

Our product portfolio is constantly growing  
and so are our frame formulations.  
You can find the latest formulations here:



[cospatec.com/formulations](https://cospatec.com/formulations)

Are you looking for application hints or a formulations  
guide? Check out our constantly growing video series  
here:



[cospatec.com/videos](https://cospatec.com/videos)



Cosphatec GmbH  
Hopfenmarkt 33  
20457 Hamburg  
Germany  
Tel. +49 40 3501669-0  
Fax +49 40 3501669-10

Cosphatec (Shanghai) Co., Ltd.  
Unit 812A, Tower 1, German Centre  
No 88 Keyuan Road, Pudong  
201203 Shanghai  
China  
Tel. +86 400 902 TKFD (8533)

[info@cosphatec.com](mailto:info@cosphatec.com)  
[www.cosphatec.com](http://www.cosphatec.com)

*Cosphatec*